



House - Terraced

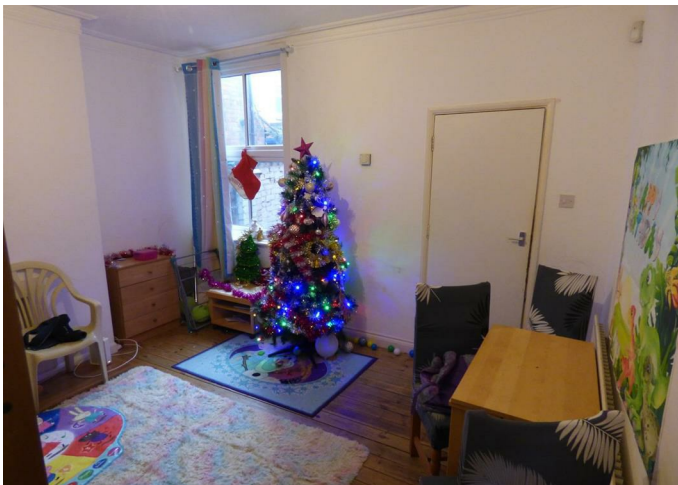
TUDOR ROAD,
LEICESTER, LE3 5HT

PCM

£925 PCM

FEATURES

- THREE BEDROOM
- SOUGHT AFTER LOCATION
- CLOSE TO LOCAL AMENITIES



DANVERS
ESTATE AGENTS

3 Bedroom House - Terraced located in Leicester

A spacious three bedroom terrace property situated in this highly sought after residential location, with excellent access into Leicester City Centre and to a wide range of local services and amenities. The accommodation is arranged over three floors and comprises entrance hall with original tiled floor, living room, separate dining room, rear lobby, kitchen, first floor landing, two double bedrooms, bathroom, separate shower room and a spacious second floor double bedroom. The property benefits from double glazing where stated, gas central heating and an enclosed courtyard garden to the rear. The property is available from February 2022.

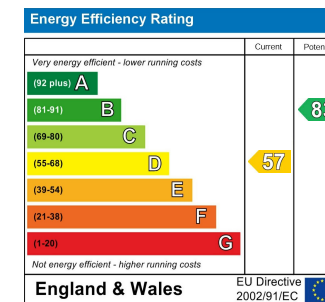
Call us on

0116 275 8888

info@danversestates.com

www.danversestates.com

Council Tax Band



Agents Note: Whilst every care has been taken to prepare these particulars, they are for guidance purposes only. All measurements are approximate and are for general guidance purposes only and whilst every care has been taken to ensure their accuracy, they should not be relied upon and potential buyers are advised to recheck the measurements.

