



House - Townhouse

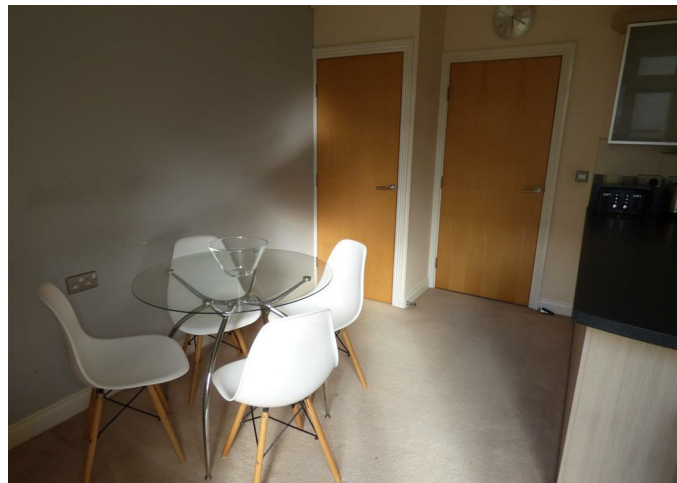
# 12 WOODFORD ROAD, LEICESTER, LE2 7AQ

Per Week

## £400 Per

### FEATURES

- 4 Double Bedrooms
- 3 Bathrooms
- Spacious Kitchen
- Modern throughout



DANVERS  
ESTATE AGENTS

# 4 Bedroom House - Townhouse located in Leicester

A very well presented four bedroom, three storey townhouse situated in the established and highly sought after residential area of Freemans Meadow, convenient for Leicester City Centre and DMU. The spacious ground floor accommodation briefly comprises entrance hall, ground floor double bedroom, shower room and open plan kitchen/dining room. The first floor offers a large first floor living room with balcony and a further double bedroom with the second floor offering a master bedroom with en suite shower room and a further double bedroom with Jack and Jill bathroom/en Suite. The property also benefits from a spacious roof terrace, enclosed rear garden, off road parking for two cars, gas central heating and double glazing.

Call us on

0116 275 8888

info@danversestates.com

www.danversestates.com

Council Tax Band

E



Whilst every attempt has been made to ensure the accuracy of the floorplan contained here, measurements of doors, windows, rooms and any other items are approximate and no responsibility is taken for any error, omission or mis-statement. This plan is for illustrative purposes only and should be used as such by any prospective purchaser. The services, systems and appliances shown have not been tested and no guarantee as to their operability or efficiency can be given.  
Made with Metropix ©2021

Energy Efficiency Rating		Current	Potential
<i>Very energy efficient - lower running costs</i>			
(92 plus)	A		88
(81-91)	B	77	
(69-80)	C		
(55-68)	D		
(39-54)	E		
(21-38)	F		
(1-20)	G		
<i>Not energy efficient - higher running costs</i>			
<b>England &amp; Wales</b>		EU Directive 2002/91/EC	

Agents Note: Whilst every care has been taken to prepare these particulars, they are for guidance purposes only. All measurements are approximate and are for general guidance purposes only and whilst every care has been taken to ensure their accuracy, they should not be relied upon and potential buyers are advised to recheck the measurements.

