



House - Terraced

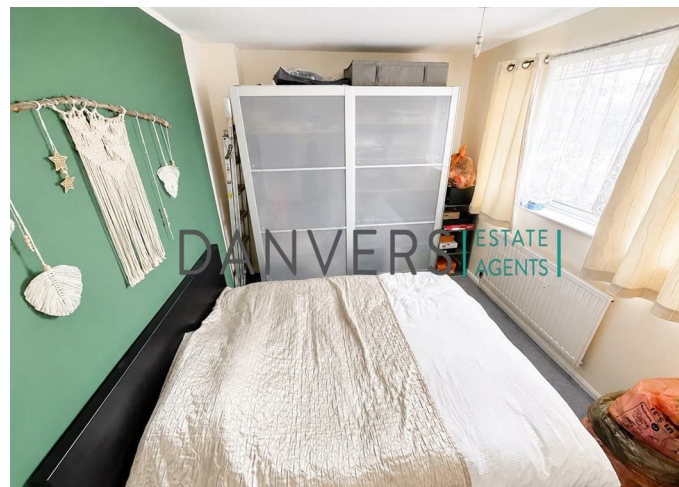
BALISFIRE GROVE LEICESTER, LE4 0LT COUNCIL TAX BAND A

Per Month

£950PCM

FEATURES

- Living Room
- 2 Double Bedrooms
- Garden
- Allocated Parking & On Road Parking Available
- Kitchen
- Family Bathroom
- Garage
- Close to Shops and Amenities



DANVERS
ESTATE AGENTS

2 Bedroom House - Terraced located in Leicester

Danvers Estate Agents are delighted to present this beautifully maintained two bedroom property located in the popular Beaumont Leys area.

The accommodation comprises a spacious living room, a separate fitted kitchen, two generously sized double bedrooms, a family bathroom and a private rear garden.

Conveniently situated close to local amenities, schools and transport links, this property would make an ideal home for professionals, couples or small families.

Early viewing is highly recommended. To arrange a viewing, please contact us on 0116 275 8888.

Call us on

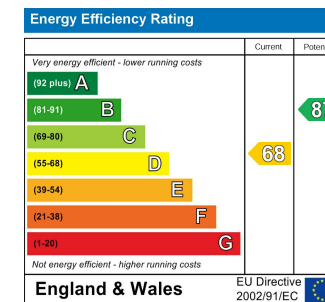
0116 275 8888

info@danversestates.com

www.danversestates.com

Council Tax Band

A



Agents Note: Whilst every care has been taken to prepare these particulars, they are for guidance purposes only. All measurements are approximate and are for general guidance purposes only and whilst every care has been taken to ensure their accuracy, they should not be relied upon and potential buyers are advised to recheck the measurements.

