

Hemmerley Drive, Whittlesey, Peterborough, PE7 1NE.



Kitchen/ Breakfast Room



Lounge



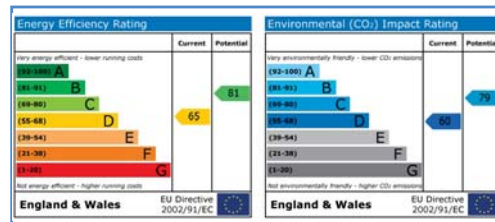
Bedroom



Bathroom



Rear Aspect



Energy Performance Certificate

Draft details only may be subject to amendment
None of the statements/measurements in these particulars should be relied on as representations of fact.
Any applications/services mentioned should not be taken as a guarantee that they are in working order.

Harrison Rose

Estate Agents Ltd

FOR SALE



Detached four bedroom family home located in Whittlesey.

Hemmerley Drive, Whittlesey, Peterborough, PE7 1NE.

- DETACHED FAMILY HOME
- FOUR BEDROOMS
- STUDY ROOM
- GARAGE & OFF ROAD PARKING
- NO FORWARD CHAIN

£314,995



T: 01733 202525 | info@harrisonroseproperty.com | F: 01733 202962

Ref: 1197

www.harrisonroseproperty.com

Ground Floor

Hall

Entrance door, single radiator, coving to ceiling, stairs leading to landing, doors to:

Dining Room 4.50m (14'9") x 2.90m (9'6")

UPVC double glazed box window to front, single radiator, laminate flooring, coving to ceiling, open plan to , door to:

Lounge 4.50m (14'9") x 4.00m (13'1")

Feature gas fire, TV point, coving to ceiling, sliding doors to rear.

Kitchen/Breakfast Room 3.29m (10'9") x 3.29m (10'9")

Fitted with a matching range of base and eye level units with worktop space over, matching breakfast bar, 1 +1/2 bowl stainless steel sink with mixer tap, built-in double oven with five ring gas hob and extractor hood over, built-in fridge/freezer and dishwasher, skirting heating, uPVC double glazed window to rear, tiled flooring, TV point, coving to ceiling, door to:

Utility 2.15m (7'1") x 1.81m (5'11")

Fitted with a matching range of base and eye level units with worktop space over with tiled splashbacks, space for washing machine and tumble dryer, single radiator, coving to ceiling, door to rear.

Study 3.29m (10'9") x 2.58m (8'5")

UPVC double glazed window to front, single radiator, TV point, coving to ceiling.

WC

Fitted with a two piece suite comprising, a wash hand basin and low-level WC, tiled splashbacks, tiled flooring, uPVC frosted double glazed window to side.

First Floor

Landing

Access to loft, coving to ceiling, airing cupboard, doors to:

Bedroom 1 4.50m (14'9") x 3.98m (13'1")max

UPVC double glazed window to rear, single radiator, laminate flooring, coving to ceiling, built in wardrobe with sliding doors, door to:

En-suite

Fitted with a three piece suite comprising a shower, pedestal wash hand basin and low-level WC, heated towel rail, shaver point, tiled flooring, uPVC double glazed window to rear.

Bedroom 2 4.48m (14'9") x 3.73m (12'3")max

Two uPVC double glazed windows to front, single radiator, coving to ceiling.

Bedroom 3 4.21m (13'10") x 2.59m (8'6")

UPVC double glazed window to front, single radiator, coving to ceiling, built in cupboard.

Bedroom 4 3.29m (10'10") x 2.12m (6'11")

UPVC double glazed window to rear, single radiator, coving to ceiling.

Bathroom

Fitted with a three piece suite comprising a bath with shower attachment, pedestal wash hand basin and low-level WC, tiled surround, heated towel rail, shaver point, tiled flooring, uPVC frosted double glazed window to side.

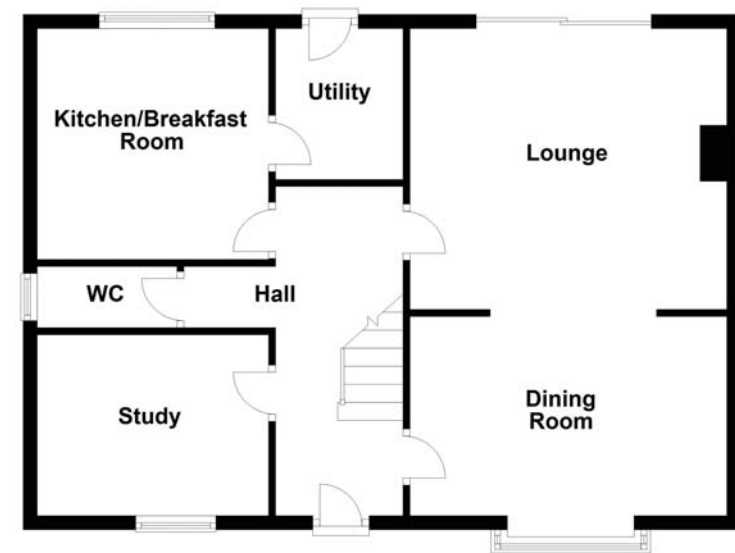
Outside

The front of the property comprises of a paved driveway, allowing for ample off road parking with an up and over garage, gravelled area to the side and side gate access to the rear. Enclosed garden, mainly laid to lawn with a patio and wooden decking area, border of mixed shrubs and bushes, external light and tap.

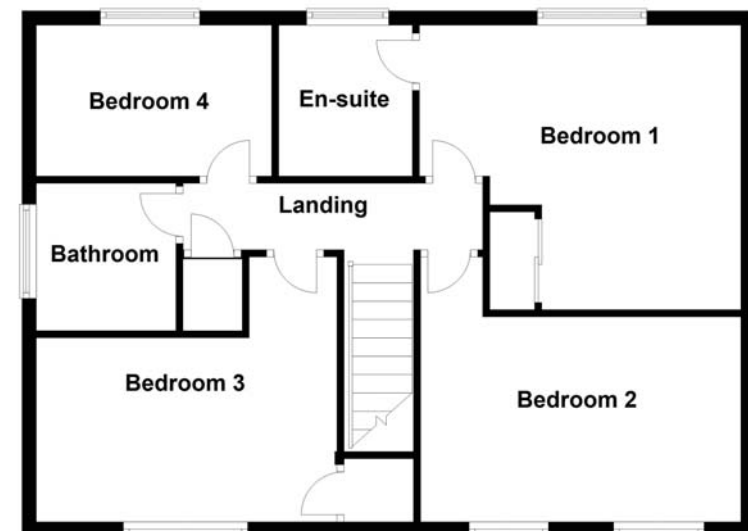
Draft details only may be subject to amendment
None of the statements/measurements in these particulars should be relied on as representations of fact.
Any applications/services mentioned should not be taken as a guarantee that they are in working order.

- Call today to arrange your free valuation -

Ground Floor



First Floor



- To arrange a viewing, please call us 01733 202525 -