

Poles House, Whittlesey, Peterborough, PE7 1DB.



Kitchen



Lounge Aspect One



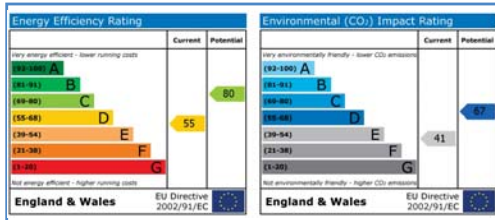
Lounge Aspect Two



Bedroom One



Bathroom



Energy Performance Certificate

Draft details only may be subject to amendment
 None of the statements/measurements in these particulars should be relied on as representations of fact.
 Any applications/services mentioned should not be taken as a guarantee that they are in working order.

Harrison Rose

Estate Agents Ltd

FOR SALE



First floor one bedroom flat located in Whittlesey.

Poles House, Whittlesey, Peterborough, PE7 1DB.

- IDEAL FIRST TIME BUY/INVESTMENT
- FIRST FLOOR FLAT
- ONE BEDROOM
- CLOSE TO TOWN CENTRE
- ALLOCATED PARKING

£75,000



T: 01733 202525 | info@harrisonroseproperty.com | F: 01733 202962

Ref: 1210

www.harrisonroseproperty.com

First Floor

Leasehold - 99 years with 91 years left

Ground Rent - £50pcm

Communal entrance door to communal hallway, stairs leading to front entrance door.

Hall

Electric heater, built in storage cupboard, doors to:

Lounge 4.41m (14'5") max x 2.59m (8'6")

UPVC double glazed window to rear, TV point, coving to ceiling, door to:

Kitchen 2.36m (7'9") x 1.91m (6'3")

Fitted with a matching range of base and eye level units with worktop space over, sink with mixer tap, built-in electric oven, four ring hobs with extractor hood over, space for fridge and washing machine, tiled surround, tiled flooring, coving to ceiling.

Bedroom 1 5.44m (17'10")max x 2.87m (9'5")

UPVC double glazed window to side, electric heater, coving to ceiling.

Bathroom

Fitted with a three piece suite comprising a bath with shower over, pedestal wash hand basin and low-level WC, tiled splashbacks, coving to ceiling.

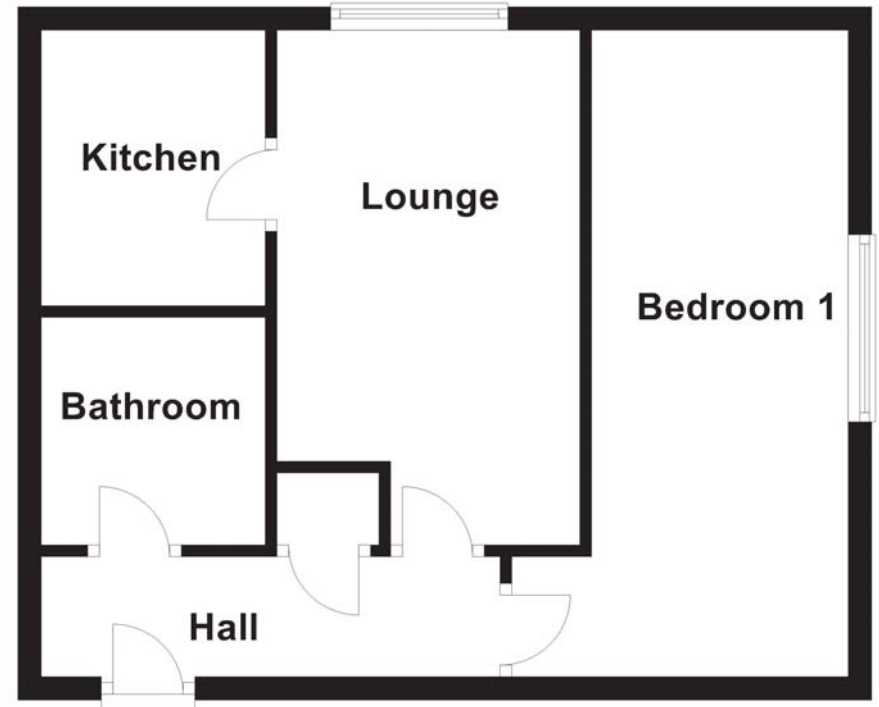
Outside

Allocated off road parking for one vehicle, communal hallway access into the first floor flat.

Draft details only may be subject to amendment
None of the statements/measurements in these particulars should be relied on as representations of fact.
Any applications/services mentioned should not be taken as a guarantee that they are in working order.

- Call today to arrange your free valuation -

Floorplan



- To arrange a viewing, please call us 01733 202525 -