

Willowbrook Drive, Coates, Whittlesey, PE7 2JG.



Kitchen



Lounge



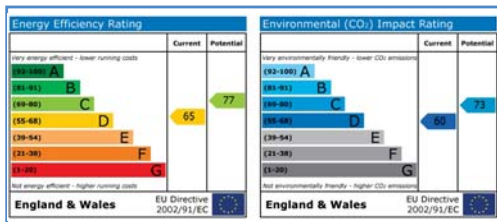
Bedroom



Bathroom



Rear Aspect



Draft details only may be subject to amendment
None of the statements/measurements in these particulars should be relied on as representations of fact.
Any applications/services mentioned should not be taken as a guarantee that they are in working order.

Harrison Rose

Estate Agents Ltd

FOR SALE



Detached four bedroom family home located in Coates.

Willowbrook Drive, Coates, Whittlesey, PE7 2JG.

- DETACHED FAMILY HOME
- FOUR BEDROOMS
- GARAGE & OFF ROAD PARKING
- ENCLOSED GARDEN
- NO FORWARD CHAIN

£290,000



T: 01733 202525 | info@harrisonroseproperty.com | F: 01733 202962

Ref: 1215

www.harrisonroseproperty.com

Ground Floor

Hall

Entrance door, laminate flooring, telephone point, uPVC double glazed window to front, stairs to landing, doors to:

Kitchen 3.38m (11'1") x 3.19m (10'5")

Fitted with a matching range of base and eye level units with worktop space over, belfast sink with mixer tap, tiled surround, space for cooker and range, single radiator, uPVC double glazed window to rear, door to family room, open plan to:

Dining Room 4.78m (15'8") x 2.71m (8'11")

UPVC double glazed window to side, single radiator, wooden flooring, double door to rear, door to:

Utility 2.46m (8'1") x 2.46m (8'1")

Fitted with base units and cupboards, 1+1/2 bowl sink with mixer tap, space for fridge, washing machine and tumble dryer, single radiator, tiled flooring, uPVC double glazed window to rear, door to rear.

Family Room 3.58m (11'9") x 3.40m (11'2")

Single radiator, laminate flooring, double doors leading to rear, stairs leading to raised lounge.

Lounge 5.71m (18'9") x 3.58m (11'9")

UPVC double glazed window to front, open fireplace, single radiator, laminate flooring, TV point, coving to ceiling.

WC

Fitted with a two piece suite comprising a wash hand basin and low-level WC.

First Floor

Landing

Access to loft, airing cupboard, doors leading to:

Bedroom 1 4.78m (15'8") max x 3.43m (11'3") max

UPVC double glazed window to rear, single radiator, coving to ceiling, door to:

En-suite

Re-fitted with a three piece suite comprising a walk in shower, vanity wash hand basin and low-level WC, heated towel rail, extractor fan, ceiling lights, uPVC frosted double glazed window to rear.

Bedroom 2 4.16m (13'8") max x 3.58m (11'9") max

UPVC double glazed window to front, single radiator, coving to ceiling.

Bedroom 3 2.85m (9'4") x 4.34m (14'3") max

UPVC double glazed window to rear, single radiator, coving to ceiling.

Bedroom 4 3.28m (10'9") x 2.78m (9'1")

UPVC double glazed window to front, single radiator, coving to ceiling.

Bathroom

Re-fitted with a four piece suite comprising a bath, shower enclosure, vanity wash hand basin and low-level WC, tiled splashbacks, heated towel rail, ceiling lights, uPVC double glazed window to front.

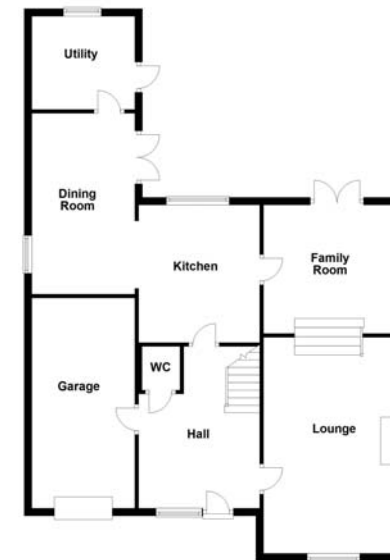
Outside

The front of the property comprises of a paved driveway, allowing for ample off road parking with an up and over garage, gravel to the side, access to rear. Enclosed rear garden, mainly laid to lawn with a patio area and a border of mixed shrubs and bushes, outside lighting.

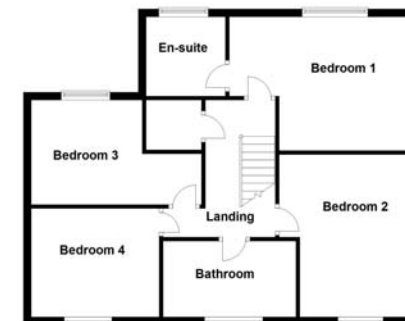
Draft details only may be subject to amendment
None of the statements/measurements in these particulars should be relied on as representations of fact.
Any applications/services mentioned should not be taken as a guarantee that they are in working order.

- Call today to arrange your free valuation -

Ground Floor



First Floor



- To arrange a viewing, please call us 01733 202525 -