

Reubens Yard, Whittlesey, Peterborough, PE7 1HP.



Kitchen



Lounge



Lounge Aspect 2



Bedroom



Bathroom



Energy Performance Certificate

Draft details only may be subject to amendment
None of the statements/measurements in these particulars should be relied on as representations of fact.
Any applications/services mentioned should not be taken as a guarantee that they are in working order.

Harrison Rose

Estate Agents Ltd

FOR SALE



Well presented first floor flat located in Whittlesey.

Reubens Yard, Whittlesey, Peterborough, PE7 1HP.

- **FIRST FLOOR FLAT**
- **ONE BEDROOM**
- **PRIVATE ENTRANCE**
- **CLOSE TO TOWN CENTRE**
- **NO FORWARD CHAIN**

£94,995



T: 01733 202525 | info@harrisonroseproperty.com | F: 01733 202962

Ref: 1239

www.harrisonroseproperty.com

Ground Floor

Private Entrance Hall

Private entrance door, stairs leading to landing.

Landing

Access to loft, storage cupboard, stairs, doors to:

Kitchen 2.96m (9'9") x 2.59m (8'6")max

Fitted with a matching range of base and eye level units with worktop space over, sink with mixer tap, space for freezer, washing machine and cooker, tile surround, single radiator, sloping ceiling, access to gas boiler, window to side.

Lounge 4.96m (16'3")max x 4.46m (14'8")max

Window to rear, two single radiators, TV point, sloping ceiling.

Bedroom 1 4.60m (15'1")max x 2.29m (7'6")

Window to rear, sloping ceiling, single radiator.

Bathroom

Fitted with a three piece suite comprising a bath with shower over, shower screen, low level WC and pedestal wash hand basin, extractor fan, single radiator.

Outside

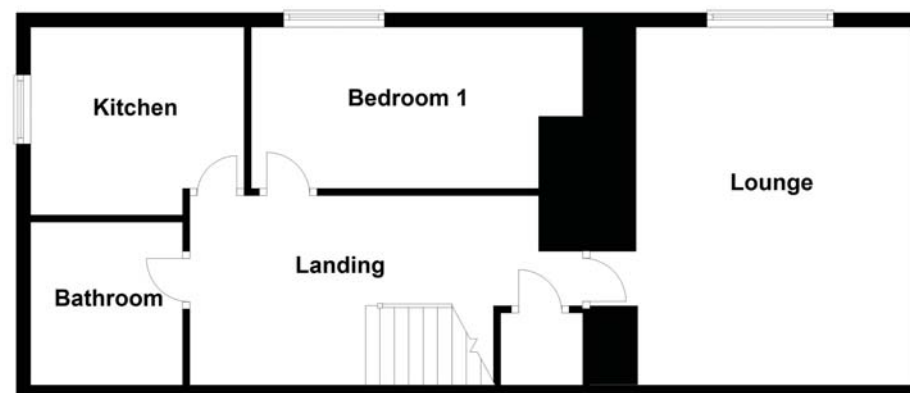
The front of the property is mainly paved allowing for allocated off road parking. Private entrance door to the rear.

Draft details only may be subject to amendment
None of the statements/measurements in these particulars should be relied on as representations of fact.
Any applications/services mentioned should not be taken as a guarantee that they are in working order.

Registered in England and Wales company No. 07655708 Registered Office: 3 Angel House, Whittlesey, Peterborough, PE1 1SE VAT No. 116 5551 26

- Call today to arrange your free valuation -

Floorplan



- To arrange a viewing, please call us 01733 202525 -