

Ramsey Road, Whittlesey, Peterborough, PE7 1DR.



Kitchen



Lounge



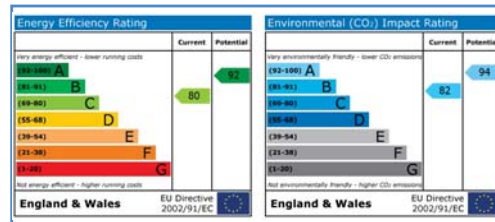
Dining Area



Bedroom



Enclosed Garden



Energy Performance Certificate

Draft details only may be subject to amendment
None of the statements/measurements in these particulars should be relied on as representations of fact.
Any applications/services mentioned should not be taken as a guarantee that they are in working order.

Harrison Rose

Estate Agents Ltd

FOR SALE



Detached four bedroom family home in Whittlesey.

Ramsey Road, Whittlesey, Peterborough, PE7 1DR.

- DETACHED FAMILY HOME
- FOUR BEDROOMS
- UTILITY ROOM
- GARAGE & OFF ROAD PARKING
- ENCLOSED GARDEN

£249,995



T: 01733 202525 | info@harrisonroseproperty.com | F: 01733 202962

Ref: 1351

www.harrisonroseproperty.com

Ground Floor

Hall

Entrance door, single radiator, stairs leading to landing, doors to:

Kitchen 3.47m (11'5") x 2.36m (7'9")

Fitted with a matching range of base and eye level units with worktop space over, 1+1/2 bowl sink with mixer tap, built-in electric double oven, four ring gas hob with extractor hood, built-in fridge, freezer and dishwasher, tiled camaro flooring, ceiling lights, door to utility, open plan to:

Dining Room 2.92m (9'7") x 1.57m (5'2")

UPVC double glazed window to front, single radiator.

Utility 2.36m (7'9")max x 1.83m (6') max

Fitted with a base cupboard with worktop space over, space for washing machine and tumble drier, flooring, extractor fan, single radiator, door to rear garden, further door to:

WC

Fitted with a two piece suite comprising, pedestal wash hand basin and low-level WC, uPVC double glazed window to rear.

Lounge 4.95m (16'3")max x 3.48m (11'5")max

UPVC double glazed double doors to rear, single radiator, telephone and TV point, tiled camaro flooring, dual air conditioning/ heating system.

Study 2.63m (8'7") x 2.03m (6'8")

UPVC double glazed window to front, single radiator, telephone point, tiled camaro flooring.

First Floor

Landing

UPVC double glazed window to rear, single radiator, access to loft, doors to:

Bedroom 1 3.42m (11'3") x 3.14m (10'3")

UPVC double glazed window to front, single radiator, telephone and TV point, dual air conditioning/ heating unit, sliding doors to wardrobe door to:

En-suite

Fitted with a three piece suite, comprising a separate shower, pedestal wash hand basin and low-level WC, tiled splashbacks, shaver point, ceiling lights.

Bedroom 2 3.02m (9'11")max x 3.04m (10') max

UPVC double glazed window to front, single radiator.

Bedroom 3 2.49m (8'2") x 2.34m (7'8")

UPVC double glazed window to rear, single radiator, ceiling lights.

Bedroom 4 2.52m (8'3") x 2.03m (6'8")

UPVC double glazed window to rear, single radiator.

Bathroom

Fitted with a three piece suite comprising a bath with shower over, pedestal wash hand basin and low-level WC, heated towel rail, shaver point, single radiator, uPVC frosted double glazed window to side.

Outside

The front of the property is mainly laid to lawn with a mixture of shrubs and bushes to border, pathway leading to front entrance door. Enclosed rear garden, mainly laid to lawn with a patio area, external tap and lighting. Garage with an up and over and off road parking to the rear.

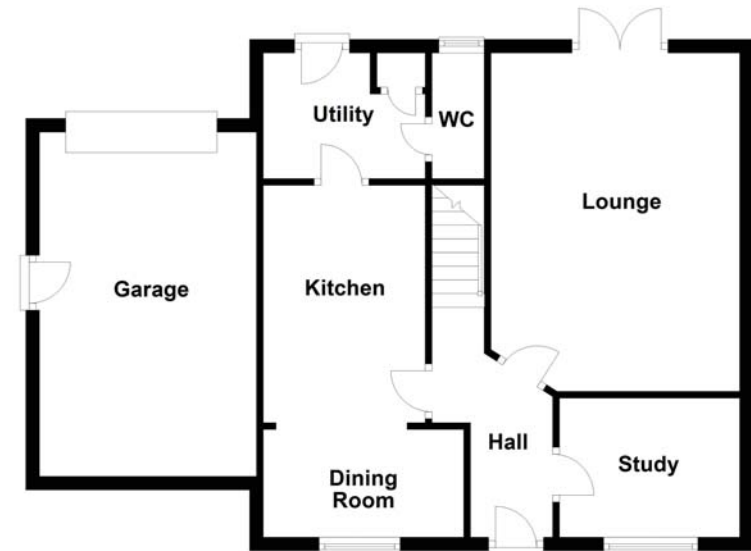
Draft details only may be subject to amendment

None of the statements/measurements in these particulars should be relied on as representations of fact.

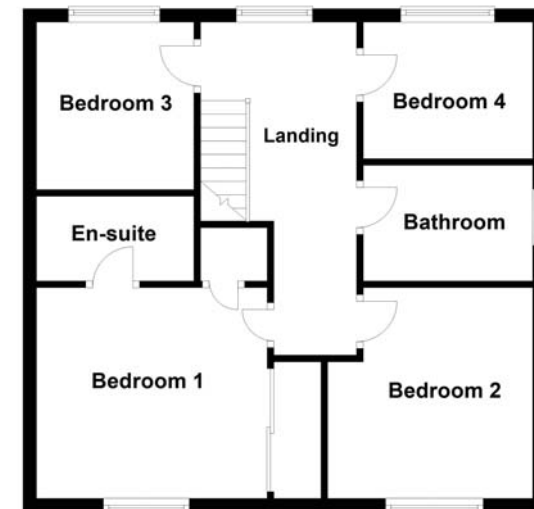
Any applications/services mentioned should not be taken as a guarantee that they are in working order.

- Call today to arrange your free valuation -

Ground Floor



First Floor



- To arrange a viewing, please call us 01733 202525 -