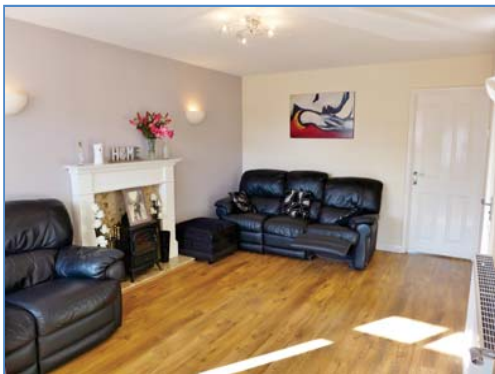


Godwit Close, Whittlesey, Peterborough, PE7 1NZ.



Kitchen



Lounge



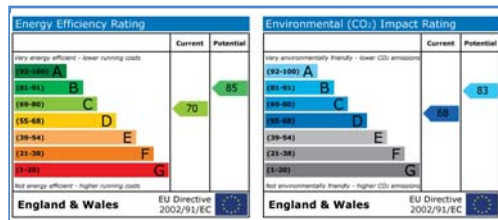
Dining Room



Bedroom



Enclosed Garden



Energy Performance Certificate

Draft details only may be subject to amendment
 None of the statements/measurements in these particulars should be relied on as representations of fact.
 Any applications/services mentioned should not be taken as a guarantee that they are in working order.

Harrison Rose

Estate Agents Ltd

FOR SALE



Detached three bedroom family home located in Whittlesey.

Godwit Close, Whittlesey, Peterborough, PE7 1NZ.

- DETACHED FAMILY HOME
- THREE BEDROOMS
- EN-SUITE
- ENCLOSED GARDEN
- FIELD VIEWS TO REAR

£224,995



T: 01733 202525 | info@harrisonroseproperty.com | F: 01733 202962

Ref: 1358

www.harrisonroseproperty.com

Ground Floor

Porch

Entrance door, door to:

Lounge 4.65m (15'3")max x 3.31m (10'10")max

UPVC double glazed window to front, feature fireplace, laminate flooring, telephone and TV point, door to:

Dining Room 3.31m (10'10") x 2.59m (8'6")

Single radiator, uPVC double glazed double doors leading to rear, door to:

Kitchen 2.59m (8'6") x 2.52m (8'3")

Fitted with a matching range of base and eye level units, sink with mixer tap, built-in electric oven, four ring gas hob with extractor hood over, space for fridge and dishwasher, uPVC double glazed window to rear.

Lobby

Stairs leading to landing, door to:

WC

Fitted with a two piece suite comprising, a wash hand basin and low-level WC, tiled splashbacks, single radiator.

Utility Area 2.52m (8'3") x 1.69m (5'6")

Space for fridge and freezer, heated towel rail, tiled surround, door to:

Store Room

Up and over door.

First Floor

Landing

Access to loft, built-in storage cupboard, doors to:

Bedroom 1 3.94m (12'11")max x 3.23m (10'7")max

UPVC double glazed window to rear, single radiator, built-in wardrobes, door to:

En-suite

Fitted with a three piece suite comprising, a shower enclosure, wash hand basin and low-level WC, tiled surround, uPVC frosted double glazed window to rear.

Bedroom 2 3.33m (10'11") x 3.23m (10'7")

UPVC double glazed window to front, single radiator, TV point, door to:

Bathroom

Fitted with a three piece suite comprising a bath with shower over, vanity wash hand basin and low-level WC, tiled surround, heated towel rail, ceiling lights, uPVC frosted double glazed window to rear.

Bedroom 3 2.71m (8'11") x 2.57m (8'5")

UPVC double glazed window to front, single radiator.

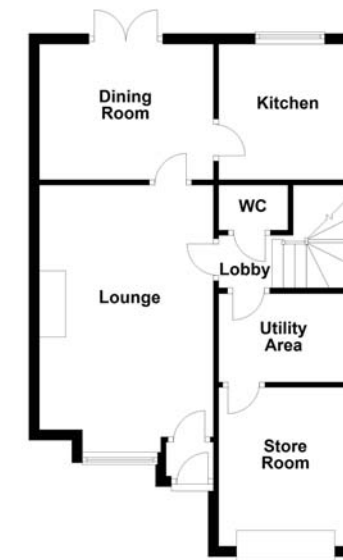
Outside

The front of the property is mainly laid to paved allowing for ample off road parking. Enclosed rear garden, mainly laid to lawn with a patio area.

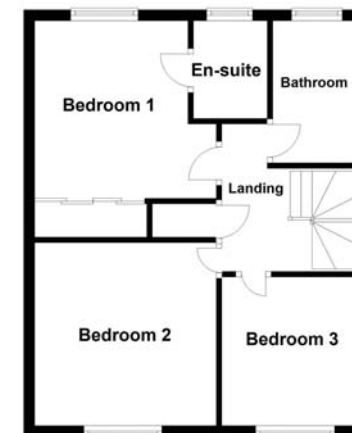
Draft details only may be subject to amendment
None of the statements/measurements in these particulars should be relied on as representations of fact.
Any applications/services mentioned should not be taken as a guarantee that they are in working order.

- Call today to arrange your free valuation -

Ground Floor



First Floor



- To arrange a viewing, please call us 01733 202525 -