

South Green, Coates, Whittlesey, PE7 2BL



Kitchen



Lounge



Dining Room



Bedroom



Enclosed Garden

Energy Efficiency Rating		Environmental (CO ₂) Impact Rating	
Current	Potential	Current	Potential
58	66	52	64

England & Wales EU Directive 2002/91/EC

Energy Performance Certificate

Draft details only may be subject to amendment
None of the statements/measurements in these particulars should be relied on as representations of fact.
Any applications/services mentioned should not be taken as a guarantee that they are in working order.

Harrison Rose

Estate Agents Ltd

FOR SALE



Detached three bedroom home located in Whittlesey.

South Green, Coates, Whittlesey, PE7 2BL

- DETACHED HOME
- THREE BEDROOMS
- DINING ROOM
- ENCLOSED GARDEN
- NO FORWARD CHAIN

£224,995



T: 01733 202525 | info@harrisonroseproperty.com | F: 01733 202962

Ref: 1375

www.harrisonroseproperty.com

Ground Floor

Hall

Entrance door, single radiator, stairs leading to landing, uPVC double glazed window to side, doors to:

Lounge 3.73m (12'3") x 3.33m (10'11")

UPVC double glazed window to front and side, feature fireplace, single radiator, TV point, coving to ceiling.

Dining Room 3.62m (11'11") x 3.02m (9'11")

Single radiator, coving to ceiling, double doors to:

Conservatory 2.23m (7'4") x 2.28m (7'6")

UPVC double glazed window surround, single radiator, door to rear garden.

Kitchen 2.47m (8'1") x 2.09m (6'10")

Fitted with a matching range of base units and cupboards, sink, space for cooker, built-in storage cupboard, uPVC double glazed window to rear, door to:

Utility 3.60m (11'10") x 3.05m (10')

Fitted with a matching range of base units, space for fridge and washing machine, uPVC double glazed window to side, door to front and rear.

First Floor

Landing

UPVC double glazed window to side, door to:

Bedroom 1 4.38m (14'4") x 3.17m (10'5")

UPVC double glazed window to side and front, single radiator.

Bedroom 2 3.14m (10'3") max x 3.08m (10'1")

UPVC double glazed window to rear, single radiator, access to storage cupboard leading to gas boiler.

Bedroom 3 2.26m (7'5") x 2.13m (7')

UPVC double glazed windows to front, single radiator.

Bathroom

Fitted with a three piece suite comprising a bath with shower over, pedestal wash hand basin and low-level WC, tiled surround, single radiator, uPVC frosted double glazed window to rear.

Outside

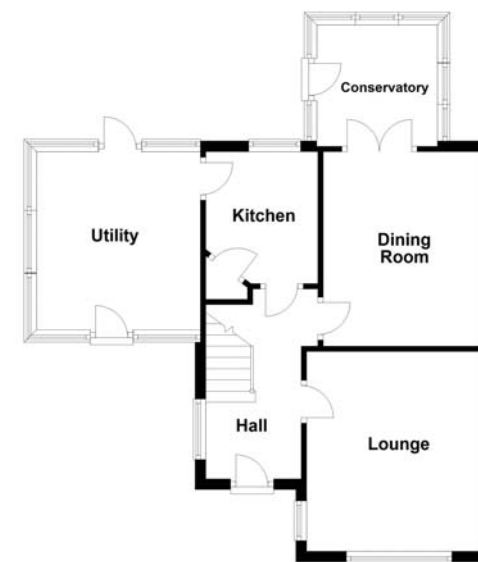
The front of the property is enclosed via a dwarf wall, mainly laid to gravel allowing for off road parking, access to garage. Enclosed garden mainly laid to lawn with gravel to the rear, pathway leading to rear gate with field views.

Draft details only may be subject to amendment

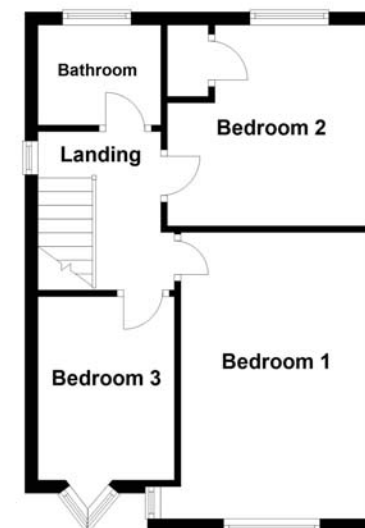
None of the statements/measurements in these particulars should be relied on as representations of fact.
Any applications/services mentioned should not be taken as a guarantee that they are in working order.

- Call today to arrange your free valuation -

Ground Floor



First Floor



- To arrange a viewing, please call us 01733 202525 -