

Peterborough Road, Whittlesey, Peterborough, PE7 1PD.



Lounge



Kitchen/Breakfast Room



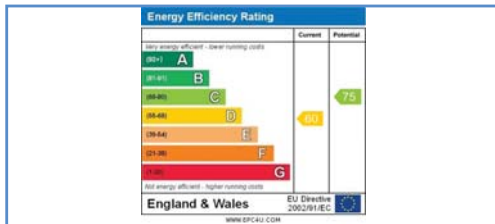
Conservatory



Bedroom One



Rear Garden



Energy Performance Certificate

Harrison Rose

Estate Agents Ltd

FOR SALE



Detached four bedroom family home located in Whittlesey.
 Peterborough Road, Whittlesey, Peterborough, PE7 1PD.

- DETACHED FAMILY HOME
- FOUR BEDROOMS
- EN-SUITE
- UTILITY ROOM
- ENCLOSED REAR GARDEN

£374,995



T: 01733 202525 | info@harrisonroseproperty.com | F: 01733 202962

Ref: 1506

www.harrisonroseproperty.com

Draft details only may be subject to amendment
 None of the statements/measurements in these particulars should be relied on as representations of fact.
 Any applications/services mentioned should not be taken as a guarantee that they are in working order.

Ground Floor

Hall

Entrance double doors, single radiator, coving to ceiling, stairs leading to landing, doors to:

Kitchen/Breakfast Room 7.23m (23'9") x 3.96m (13')

Fitted with a matching range of base and eye level units with worktop space over, sink with mixer tap, space for fridge, dishwasher and cooker, tiled flooring, telephone point, ceiling lights, double glazed window to rear, side and front.

Dining Room 3.97m (13') x 3.65m (12')

Double glazed window to rear, single radiator, coving to ceiling, door to utility room, open plan to:

Lounge 3.67m (12') x 3.66m (12')

Double glazed bay window to front, feature open fireplace, TV point, coving to ceiling, single radiator.

Utility Room 4.75m (15'7") x 2.26m (7'5")

Fitted with a matching range of base and eye level units with worktop space over, 1+1/2 bowl sink with mixer tap, space for fridge and washing machine, tiled flooring, door to:

Conservatory 4.75m (15'7") x 3.04m (10')

Double glazed window surround, tiled flooring, double doors leading to rear garden.

WC

Fitted with a two piece suite comprising, a pedestal wash hand basin and low-level WC, tiled surround, single radiator.

First Floor

Landing

Single radiator, coving to ceiling, door to:

Bedroom 1 5.61m (18'5") x 3.92m (13')

Double glazed window to front, electric heating, coving to ceiling, door to:

En-suite

Fitted with a three piece suite with a shower enclosure, pedestal wash hand basin and low-level WC, shaver point, electric heating, tiled flooring, coving to ceiling, double glazed window to rear.

Bedroom 2 3.67m (12') x 3.65m (12')max

Double glazed bay window to front, single radiator, coving to ceiling, door to:

Bedroom 3 3.65m (12') x 3.65m (12')

Double glazed window to rear, built-in wardrobes, single radiator, coving to ceiling.

Bedroom 4 2.07m (6'9") x 1.83m (6')

Double glazed window to front, single radiator, coving to ceiling.

Bathroom

Fitted with a three piece suite comprising bath with shower over, pedestal wash hand basin and low-level WC, tiled floor, coving to ceiling, extractor fan, tiled surround, single radiator, double glazed window to rear.

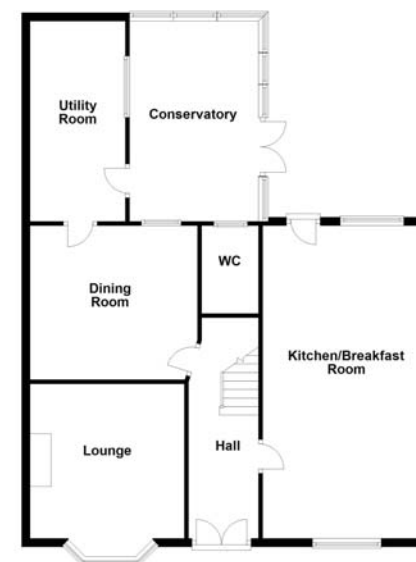
Outside

The front of the property is mainly laid to gravel allowing for ample off road parking, leading to double garage, gate to rear garden, a mixture of shrubs and bushes. Enclosed rear garden, mainly laid to lawn with a patio area, a mixture of shrubs and bushes to border, window to garage.

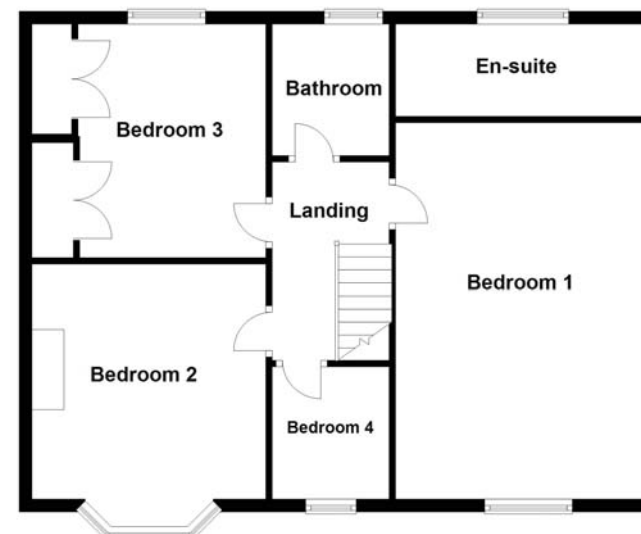
Draft details only may be subject to amendment
None of the statements/measurements in these particulars should be relied on as representations of fact.
Any applications/services mentioned should not be taken as a guarantee that they are in working order.

- Call today to arrange your free valuation -

Ground Floor



First Floor



- To arrange a viewing, please call us 01733 202525 -