

Redshank Close, Whittlesey, Peterborough, PE7 1PP.



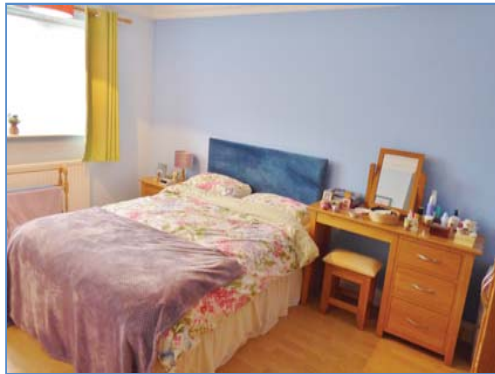
Lounge



Dining Area



Kitchen



Bedroom



Rear Garden



Energy Performance Certificate

Draft details only may be subject to amendment
None of the statements/measurements in these particulars should be relied on as representations of fact.
Any applications/services mentioned should not be taken as a guarantee that they are in working order.

Harrison Rose

Estate Agents Ltd

FOR SALE



Link -Detached three bedroom family home in Whittlesey.

Redshank Close, Whittlesey, Peterborough, PE7 1PP.

- LINK-DETACHED FAMILY HOME
- THREE BEDROOMS
- DINING ROOM
- ADDITIONAL FAMILY EXTENSION
- EN-SUITE

£259,995



T: 01733 202525 | info@harrisonroseproperty.com | F: 01733 202962

Ref: 1515

www.harrisonroseproperty.com

Ground Floor

Hall
Entrance door, built-in storage cupboard, single radiator, laminate flooring, coving to ceiling, stairs leading to landing.

Lounge 4.44m (14'7") max x 3.64m (11'11")
UPVC double glazed box window to front, feature gas living flame effect fireplace, telephone and TV point, coving to ceiling, carpet, open plan to:

Dining Room 4.25m (14') x 2.98m (9'9")
Single radiator, coving to ceiling, carpet, double doors to rear, door to:

Kitchen 4.25m (14') x 2.42m (7'11")
Fitted with a matching range of base and eye level units with worktop space over, 1+1/2 bowl sink with mixer tap, built-in electric oven, four ring gas hob and extractor hood over, space for fridge, dishwasher and washing machine, cushioned flooring, uPVC double glazed window to rear, door to:

Office 2.82m (9'3") x 2.74m (9')
UPVC double glazed window to rear, laminate flooring, single radiator, door to:

Family Room 3.53m (8'4") x 3.53m (11'7")
UPVC double glazed window to side and rear, single radiator, TV point, access to gas boiler, laminate flooring, door to rear.

WC
Fitted with a two piece suite comprising, a pedestal wash hand basin and low-level WC, tiled splashbacks, laminate flooring, uPVC frosted double glazed window to front.

First Floor

Landing
Access to loft, built-in storage cupboard, uPVC double glazed window to side, doors to:

Bedroom 1 4.32m (14'2")max x 3.47m (11'5")max
UPVC double glazed window to rear, single radiator, laminate flooring, coving to ceiling, door to:

En-suite
Fitted with a three piece suite comprising a separate shower, pedestal wash hand basin and low-level WC, tiled splashbacks, coving to ceiling, laminate flooring, uPVC frosted double glazed window to rear.

Bedroom 2 4.47m (14'8") x 2.69m (8'10")
UPVC double glazed window to front, single radiator, carpet, coving to ceiling.

Bedroom 3 3.35m (11')max x 2.70m (8'10")max
UPVC double glazed window to front, radiator, coving to ceiling, carpet, door to:

Bathroom
Fitted with a three piece suite comprising a bath with shower attachment, pedestal wash hand basin and low-level WC, single radiator, coving to ceiling, cushioned flooring, uPVC frosted double glazed window to rear.

Outside
The front of the property is mainly laid to lawn with a paved driveway to the side leading to an up and over garage with access to power and lighting. Enclosed rear garden, mainly laid to lawn with two patio areas external lighting. Extra land next to the garden for caravan/ car parking.

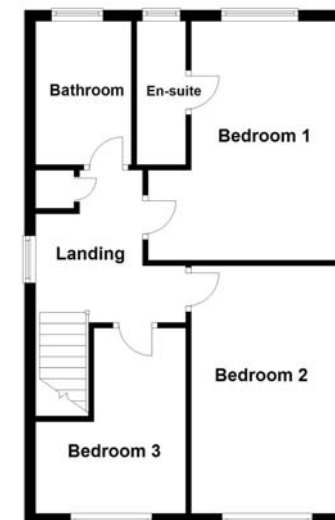
Draft details only may be subject to amendment
None of the statements/measurements in these particulars should be relied on as representations of fact.
Any applications/services mentioned should not be taken as a guarantee that they are in working order.

- Call today to arrange your free valuation -

Ground Floor



First Floor



- To arrange a viewing, please call us 01733 202525 -