

Whiteacres, Whittlesey, Peterborough, Cambs, PE7 1XR.



Lounge



Kitchen/Breakfast Room



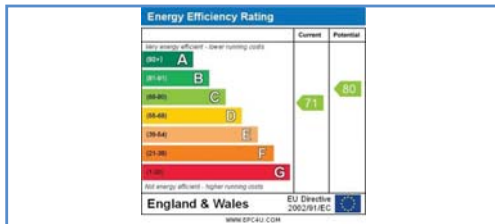
Dining Room



Bedroom



Enclosed Rear Garden



Energy Performance Certificate

Draft details only may be subject to amendment
 None of the statements/measurements in these particulars should be relied on as representations of fact.
 Any applications/services mentioned should not be taken as a guarantee that they are in working order.

Harrison Rose

Estate Agents Ltd

FOR SALE



Link-detached four bedroom family home in Whittlesey.

Whiteacres, Whittlesey, Peterborough, Cambs, PE7 1XR.

- LINK-DETACHED FAMILY HOME
- FOUR BEDROOMS
- EN-SUITE
- UTILITY ROOM
- ENCLOSED REAR GARDEN

£289,995



T: 01733 202525 | info@harrisonroseproperty.com | F: 01733 202962

Ref: 0732

www.harrisonroseproperty.com

Ground Floor

Porch

Entrance door, uPVC double glazed window to front, door to:

Lounge 6.03m (19'9")max x 3.68m (12'1")

UPVC double glazed window to front, feature fireplace, stairs leading to landing, door to:

Dining Room 2.87m (9'5") x 2.56m (8'5")

Coving to ceiling, sliding doors to rear garden, door to:

Kitchen/Breakfast Room 3.09m (10'2") x 5.66m (18'7")

Fitted with a matching range of base and eye level units with worktop space over and matching breakfast bar, sink with mixer tap, built-in electric oven, built-in four ring electric hob, space for fridge and freezer, doors to:

WC

Fitted with a two piece suite comprising, a pedestal wash hand basin and low-level WC, tiled splashbacks.

Utility 2.69m (8'10") x 2.65m (8'8")

Fitted with a matching range of base units and cupboards, 1+1/2 bowl sink with mixer tap, space for washing machine and tumble dryer, uPVC double glazed window to front, sliding door to rear garden, further door to:

Garden Room 2.69m (8'10") x 2.48m (8'2")

UPVC double glazed window to side and front, sliding door to rear garden.

First Floor

Landing

UPVC double glazed window to front, built-in storage cupboard, doors to:

Bedroom 2 3.68m (12'1") x 3.06m (10')

UPVC double glazed window to front, single radiator, built-in cupboard.

Bedroom 3 2.96m (9'1") max x 2.23m (7'4")

UPVC double glazed window to rear, built-in storage cupboard, single radiator.

Bedroom 4 3.29m (10'10") x 2.25m (7'4")

UPVC double glazed window to rear, single radiator.

Inner Hallway

Built-in storage cupboard, doors to:

Bedroom 1 4.19m (13'9") x 2.35m (7'8")

UPVC double glazed window to front, single radiator, sliding doors to:

En-suite

Fitted with a three piece suite comprising a shower enclosure, vanity wash hand basin and low-level WC, tiled splashbacks, heated towel rail.

Bathroom

Fitted with a four piece suite comprising a bath, shower enclosure, vanity wash hand basin and low-level WC, tiled surround, uPVC double glazed window to rear.

Outside

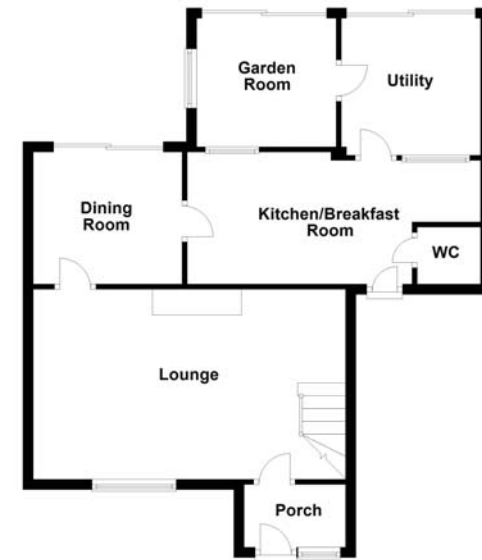
The front of the property is mainly laid to lawn with a mixture of shrubs and bushes to border, driveway to the side allowing for ample off road parking leading to an up and over garage.

Enclosed rear garden, mainly laid to lawn with a mixture of shrubs and bushes to border, external lighting and tap.

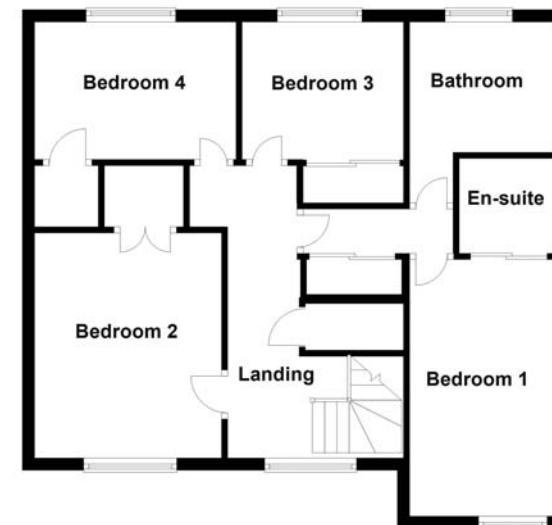
Draft details only may be subject to amendment
None of the statements/measurements in these particulars should be relied on as representations of fact.
Any applications/services mentioned should not be taken as a guarantee that they are in working order.

- Call today to arrange your free valuation -

Ground Floor



First Floor



- To arrange a viewing, please call us 01733 202525 -