

# Harrison Rose

Estate Agents Ltd

## FOR SALE



New build, detached four bedroom family home in Quadring  
**Rear of Main Road, Quadring, Nr Spalding, PE11 4PW.**

- DETACHED NEW BUILD
- EXCLUSIVE DEVELOPMENT
- REAR GARDEN
- DOUBLE GARAGE & OFF ROAD PARKING
- 10 YEAR BUILD ZONE STRUCTURAL WARRANTY

**£375,000**

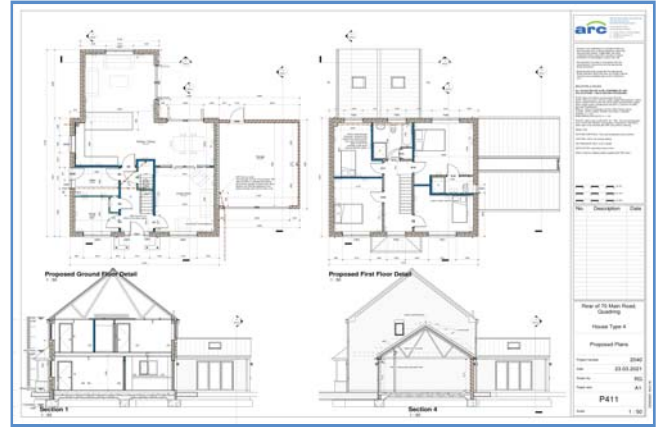


T:: 01733 202525 | [spalding@harrisonroseproperty.com](mailto:spalding@harrisonroseproperty.com) | F: 01733 202962

Ref: S079

[www.harrisonroseproperty.com](http://www.harrisonroseproperty.com)

Registered in England and Wales company No. 012745964 Registered Office: 8 Francis Street, Spalding, Lincolnshire PE11 1AT



## Ground Floor

### Hall

Entrance door, built-in storage cupboard, stairs leading to landing, doors to:

### Lounge

UPVC double glazed window to front.

### Kitchen/Diner

UPVC double glazed windows, built-in units and worktops.

### Utility

UPVC double glazed window, door to rear.

### Study

UPVC double glazed window

### WC

To be fitted with a two piece suite comprising a low level WC and pedestal wash hand basin.

## First Floor

### Landing

Doors to:

### Bedroom 1

UPVC double glazed window, door to:

### En-suite

UPVC double glazed window, details to be confirmed.

### Bedroom 2

UPVC double glazed window.

### Bedroom 3

UPVC double glazed window to side.

### Bedroom 4

UPVC double glazed window to rear.

### Bathroom

Frosted uPVC double glazed window to rear, details to be confirmed.

### Outside

This property is located in an exclusive development of five detached family homes in the village of Quadring, South Lincolnshire. The property currently under construction will include a double garage, driveway and gardens.

### AGENTS NOTE:

PLEASE NOTE: There will be a management charge payable on each plot per annum. Price to be confirmed. These illustrations are artists impressions only and not to be taken as an actual representation of finish or specification.

Draft details only may be subject to amendment  
None of the statements/measurements in these particulars should be relied on as representations of fact.  
Any applications/services mentioned should not be taken as a guarantee that they are in working order.