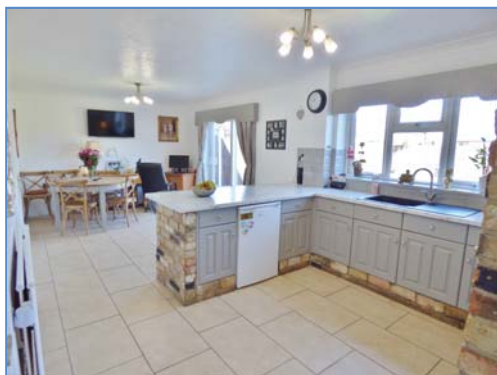


Stonald Road, Whittlesey, Peterborough, PE7 1QR.



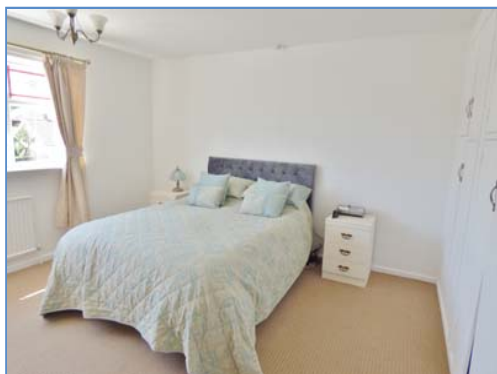
Lounge



Kitchen/Diner Aspect 1



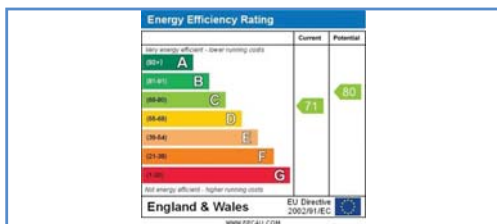
Kitchen/Diner Aspect 2



Bedroom



Enclosed Rear Garden



Energy Performance Certificate

Draft details only may be subject to amendment
None of the statements/measurements in these particulars should be relied on as representations of fact.
Any applications/services mentioned should not be taken as a guarantee that they are in working order.

Harrison Rose

Estate Agents Ltd

FOR SALE



Detached five bedroom family home located in Whittlesey.

Stonald Road, Whittlesey, Peterborough, PE7 1QR.

- DETACHED FAMILY HOME
- FIVE BEDROOMS
- UTILITY ROOM
- GARAGE & OFF ROAD PARKING
- ENCLOSED REAR GARDEN

£384,995



T: 01733 202525 | info@harrisonroseproperty.com | F: 01733 202962

Ref: 1609

www.harrisonroseproperty.com

Ground Floor

Porch

Entrance door, door to:

Hall

Window to front, built-in storage cupboard, single radiator, telephone point, stairs leading to landing, door to:

Kitchen/Diner 7.37m (24'2")max x 3.34m (11')max

Fitted with a matching range of base and eye level units with worktop space over, sink with mixer tap, electric double oven, five ring gas hob with extractor hood over, space for fridge, two radiators, TV point, tiled flooring, coving to ceiling, uPVC double glazed window to rear, sliding doors to rear garden, double doors to:

Lounge 5.12m (16'9") x 3.94m (12'11")

UPVC double glazed window to front, feature gas fireplace, solid wooden flooring, TV point, two radiators.

Lobby

Tiled flooring, single radiator, door to side of property and garage, further door to:

Utility 2.92m (9'7") x 2.77m (9'1")

Fitted with a matching base and eye level units, sink with mixer tap, space for washing machine, single radiator, door to shower, uPVC double glazed window to rear, door to:

WC

Fitted with a two suite comprising a two piece suite, a low level WC and pedestal wash hand, UPVC frosted double glazed window to side.

First Floor

Landing

Single radiator, built-in storage cupboard, door to:

Bedroom 1 3.94m (12'11") x 3.77m (12'5")

UPVC double glazed window to front, single radiator, two built-in wardrobes, TV and telephone point.

Bedroom 2 3.50m (11'6") x 3.35m (11')

UPVC double glazed window to rear, single radiator, TV and telephone point.

Bedroom 3 4.08m (13'5") x 2.77m (9'1")

UPVC double glazed window to front, laminate flooring, TV point, coving to ceiling.

Bedroom 4 3.94m (12'11") max x 2.77m (9'1")

UPVC double glazed window to rear, single radiator, laminate flooring, coving to ceiling.

Bedroom 5 4.08m (13'5") max x 2.47m (8'1")

UPVC double glazed window to front, built-in storage cupboard.

Shower Room

Fitted with a three suite comprising a shower enclosure, low-level WC and extractor fan, tiled surround, tiled flooring, frosted uPVC double glazed window to side.

Bathroom

Re-fitted with a three piece suite comprising a bath, vanity wash hand basin and low-level WC, tiled surround, heated towel rail, coving to ceiling, uPVC frosted double glazed window to rear.

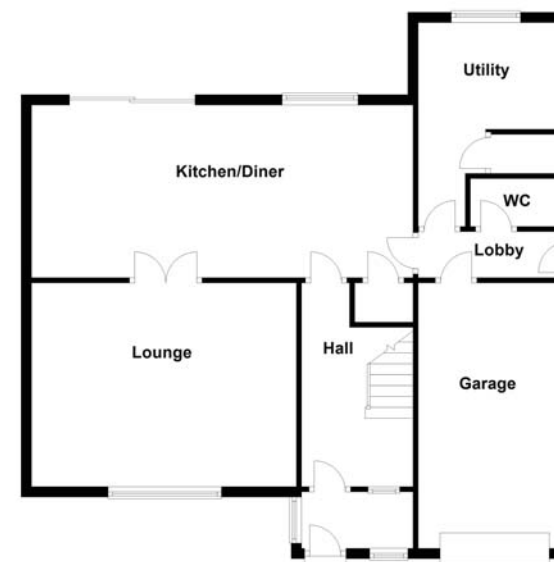
Outside

The front of the property is mainly laid to lawn with driveway to the side leading to garage via an up and over door with power and lighting. Enclosed rear garden, mainly laid to lawn with a patio area, external tap and lighting.

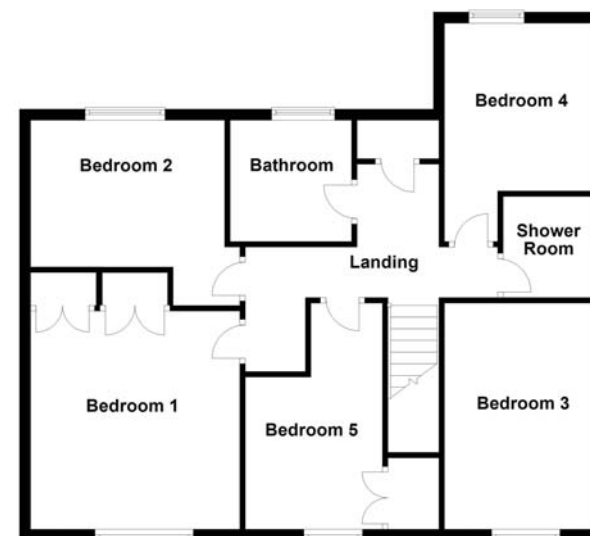
Draft details only may be subject to amendment
None of the statements/measurements in these particulars should be relied on as representations of fact.
Any applications/services mentioned should not be taken as a guarantee that they are in working order.

- Call today to arrange your free valuation -

Ground Floor



First Floor



- To arrange a viewing, please call us 01733 202525 -