

Burnthouse Road, Turves, Whittlesey, PE7 2DP



Lounge



Bedroom



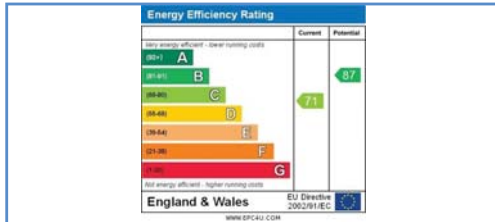
Bedroom



Garden Aspect 1



Garden Aspect 2



Energy Performance Certificate

Draft details only may be subject to amendment
 None of the statements/measurements in these particulars should be relied on as representations of fact.
 Any applications/services mentioned should not be taken as a guarantee that they are in working order.

Harrison Rose

Estate Agents Ltd

FOR SALE



Semi-detached three bedroom family home in Turves.

Burnthouse Road, Turves, Whittlesey, PE7 2DP

- SEMI-DETACHED FAMILY HOME
- THREE BEDROOMS
- REAR GARDEN
- VILLAGE LOCATION
- NO FORWARD CHAIN

£189,995



T: 01733 202525 | info@harrisonroseproperty.com | F: 01733 202962

Ref:

www.harrisonroseproperty.com

Ground Floor

Hall

Entrance door, single radiator, telephone point, stairs leading to landing, uPVC double glazed window to side, doors to:

Kitchen/Diner 4.63m (15'2")max x 3.37m (11'1")max

Fitted with a range of base and eye level units with worktop space over, space for fridge and washing machine, built-in electric oven, four ring gas hob, single radiator, coving to ceiling, double glazed box window to front and further double window to front.

Lounge 4.63m (15'2") x 3.29m (10'10")

UPVC double glazed window to rear, single radiator, laminate flooring, TV point, coving to ceiling, sliding doors to rear garden.

First Floor

Landing

Built-in storage cupboard, doors to:

Bedroom 1 3.33m (10'11") x 2.60m (8'6")

Double glazed window to front, built-in storage cupboard.

Bedroom 2 3.37m (11'1") x 2.33m (7'8")

Double glazed window to rear, single radiator.

Bedroom 3 2.41m (7'11") x 2.21m (7'3")

Double glazed window to rear, single radiator, access to loft.

Bathroom

Fitted with a three piece suite comprising a bath with shower over, low-level WC and pedestal wash hand basin, tiled splashbacks, double glazed window to front.

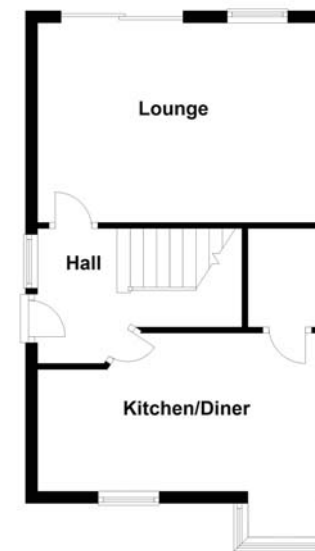
Outside

The front of the property is mainly laid to lawn, with driveway to the side allowing for off road parking, side gate. Rear garden, mainly laid to lawn with a patio area.

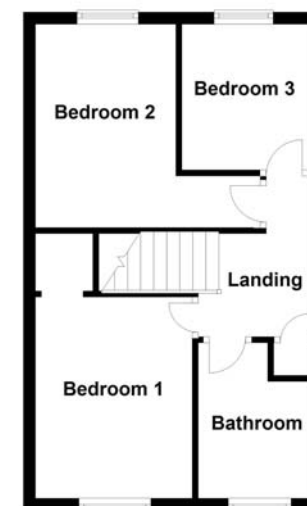
Draft details only may be subject to amendment
None of the statements/measurements in these particulars should be relied on as representations of fact.
Any applications/services mentioned should not be taken as a guarantee that they are in working order.

- Call today to arrange your free valuation -

Ground Floor



First Floor



- To arrange a viewing, please call us 01733 202525 -