

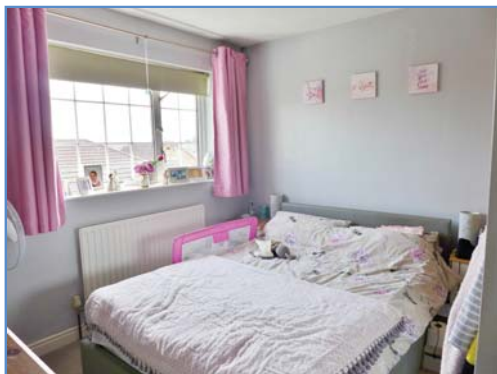
**Davie Lane, Whittlesey, Peterborough, PE7 1YZ.**



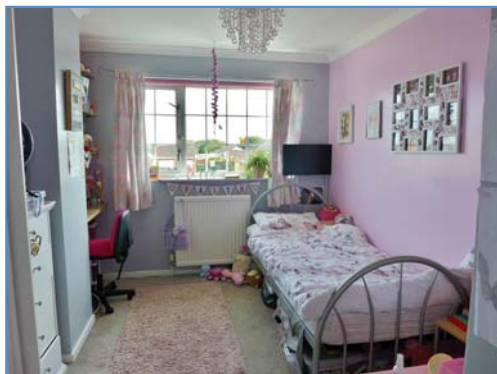
Lounge



Kitchen



Bedroom One



Bedroom



Enclosed Rear Garden



Draft details only may be subject to amendment  
None of the statements/measurements in these particulars should be relied on as representations of fact.  
Any applications/services mentioned should not be taken as a guarantee that they are in working order.

# Harrison Rose

Estate Agents Ltd

## FOR SALE



Semi-detached, three bedroom family home in Whittlesey.

**Davie Lane, Whittlesey, Peterborough, PE7 1YZ.**

- SEMI-DETACHED FAMILY HOME
- THREE/FOUR BEDROOMS
- CONSERVATORY
- OFF ROAD PARKING
- ENCLOSED REAR GARDEN

**£234,995**



T: 01733 202525 | info@harrisonroseproperty.com | F: 01733 202962

Ref: 1776

[www.harrisonroseproperty.com](http://www.harrisonroseproperty.com)

## Ground Floor

### Porch

Front entrance door, uPVC double glazed window to side, door to:

### Hall

Radiator, stairs leading to landing, laminate flooring, built-in storage cupboard, open plan to:

### Kitchen 3.48m (11'5") x 2.51m (8'2)

Fitted with a matching range of base and eye level units with worktop space over, sink with mixer tap, built-in electric double oven, built-in four ring electric hob with extractor hood over, space for dishwasher, washing machine and tumble dryer, laminate flooring, radiator, uPVC double glazed window to front.

### Lounge 6.13m (20'1")max x 3.68m (12')max

UPVC double glazed window to rear, feature log burner, radiator, laminate flooring, coving to ceiling, telephone and TV point, coving to ceiling, double doors to:

### Conservatory 3.32m (10'10")max x 3.44m (11'3")max

UPVC double glazed window surround, tiled flooring, double doors to rear garden.

### Bedroom 4/ Dining Room 4.61m (15'1")max x 2.49m (8'2")max

UPVC double glazed window to front, radiator, laminate flooring.

## First Floor

### Landing

UPVC double glazed window to side, built-in storage cupboard with gas boiler, access to loft, doors to:

### Bedroom 1 3.16m (10'4") x 3.19m (10'2")

UPVC double glazed window to rear, radiator, TV point.

### Bedroom 2 4.05m (13'3") max x 2.93m (9'8")

UPVC double glazed window to rear, radiator, TV point, coving to ceiling.

### Bedroom 3 4.09m (13'5") x 2.25m (7'5")

UPVC double glazed window to front, radiator, TV point.

### Bathroom

Fitted with a four piece suite comprising a freestanding bath, shower enclosure, pedestal wash hand basin and low-level WC, heated towel rail, uPVC double glazed window to front.

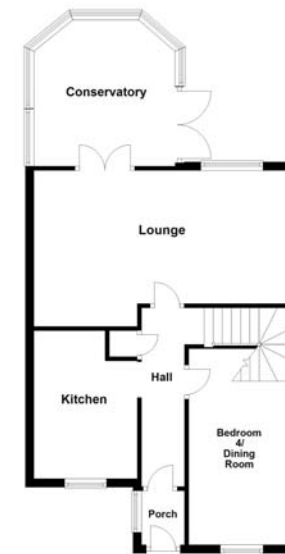
### Outside

The front of the property has a driveway allowing for off road parking, side gate. Enclosed rear garden, mainly laid to lawn with a patio area.

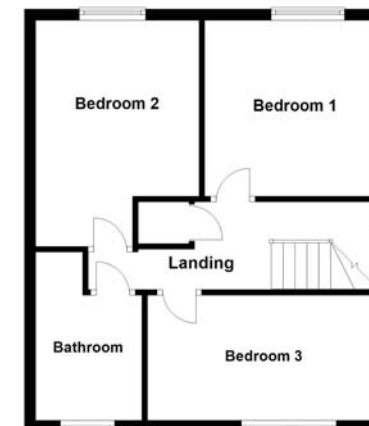
Draft details only may be subject to amendment  
None of the statements/measurements in these particulars should be relied on as representations of fact.  
Any applications/services mentioned should not be taken as a guarantee that they are in working order.

- Call today to arrange your free valuation -

## Ground Floor



## First Floor



This floorplan has been drawn for illustration purposes only. Prospective purchasers should seek independent confirmation.

- To arrange a viewing, please call us 01733 202525 -