

South Green, Coates, Whittlesey, PE7 2BL.



Kitchen



Lounge/Diner Aspect 1



Lounge/Diner Aspect 2



Bedroom One



Bedroom Two



Draft details only may be subject to amendment
None of the statements/measurements in these particulars should be relied on as representations of fact.
Any applications/services mentioned should not be taken as a guarantee that they are in working order.

Harrison Rose

Estate Agents Ltd

FOR SALE



Mid-terrace, three bedroom family home located in Coates.

South Green, Coates, Whittlesey, PE7 2BL.

- IDEAL FIRST TIME BUY/ INVESTMENT
- THREE BEDROOMS
- LOUNGE/DINER
- ENCLOSED REAR GARDEN
- NO FORWARD CHAIN

£159,950



T: 01733 202525 | info@harrisonroseproperty.com | F: 01733 202962

Ref: 1779

www.harrisonroseproperty.com

Ground Floor

Porch

Entrance door leading to:

Hallway

Telephone point, stairs leading to first floor, door to:

Lounge/Dining Room `L' shaped room 6.85m (22'4") max x 3.80m (12'5") max

UPVC double glazed window to rear, uPVC double glazed window to front, electric storage heater, laminate flooring, TV point, feature fireplace.

Kitchen 2.94m (9'8") max x 2.84m (9'4")

Fitted with a matching range of base and eye level units with worktop space over, sink unit with mixer tap, space for fridge and washing machine, built-in electric oven, built-in four ring hob with extractor hood, uPVC double glazed window to rear, storage cupboard, electric storage heater, laminate flooring, door to rear garden.

First Floor

Landing

Access to loft, door to:

Bedroom 1 4.37m (14'4") x 2.93m (9'7")

Two uPVC double glazed windows to rear, electric storage heater.

Bedroom 2 3.81m (12'6") x 3.03m (9'10")

UPVC double glazed window to front.

Bedroom 3 2.63m (8'8") max x 2.44m (8') max

UPVC double glazed window to front.

Bathroom

Fitted with three piece suite comprising bath with shower over, wash hand basin and WC, uPVC double glazed window to rear.

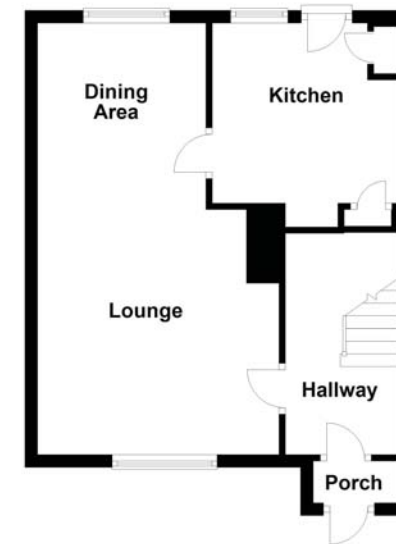
Outside

Small front garden area leading to front entrance door. Enclosed rear garden with flower and shrub beds and three outside storage sheds.

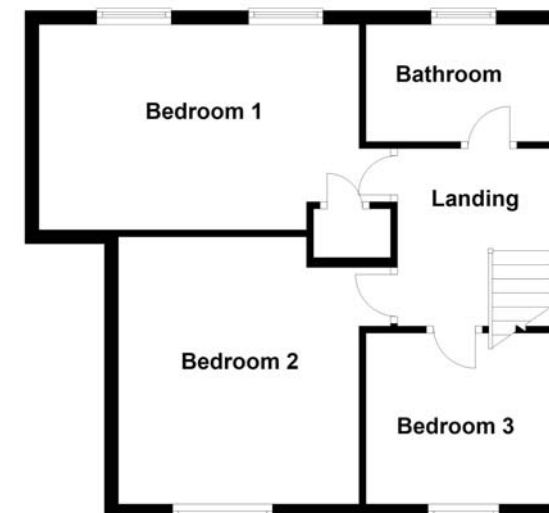
Draft details only may be subject to amendment
None of the statements/measurements in these particulars should be relied on as representations of fact.
Any applications/services mentioned should not be taken as a guarantee that they are in working order.

- Call today to arrange your free valuation -

Ground Floor



First Floor



This floorplan has been drawn for illustration purposes only. Prospective purchasers should seek independent confirmation.

- To arrange a viewing, please call us 01733 202525 -