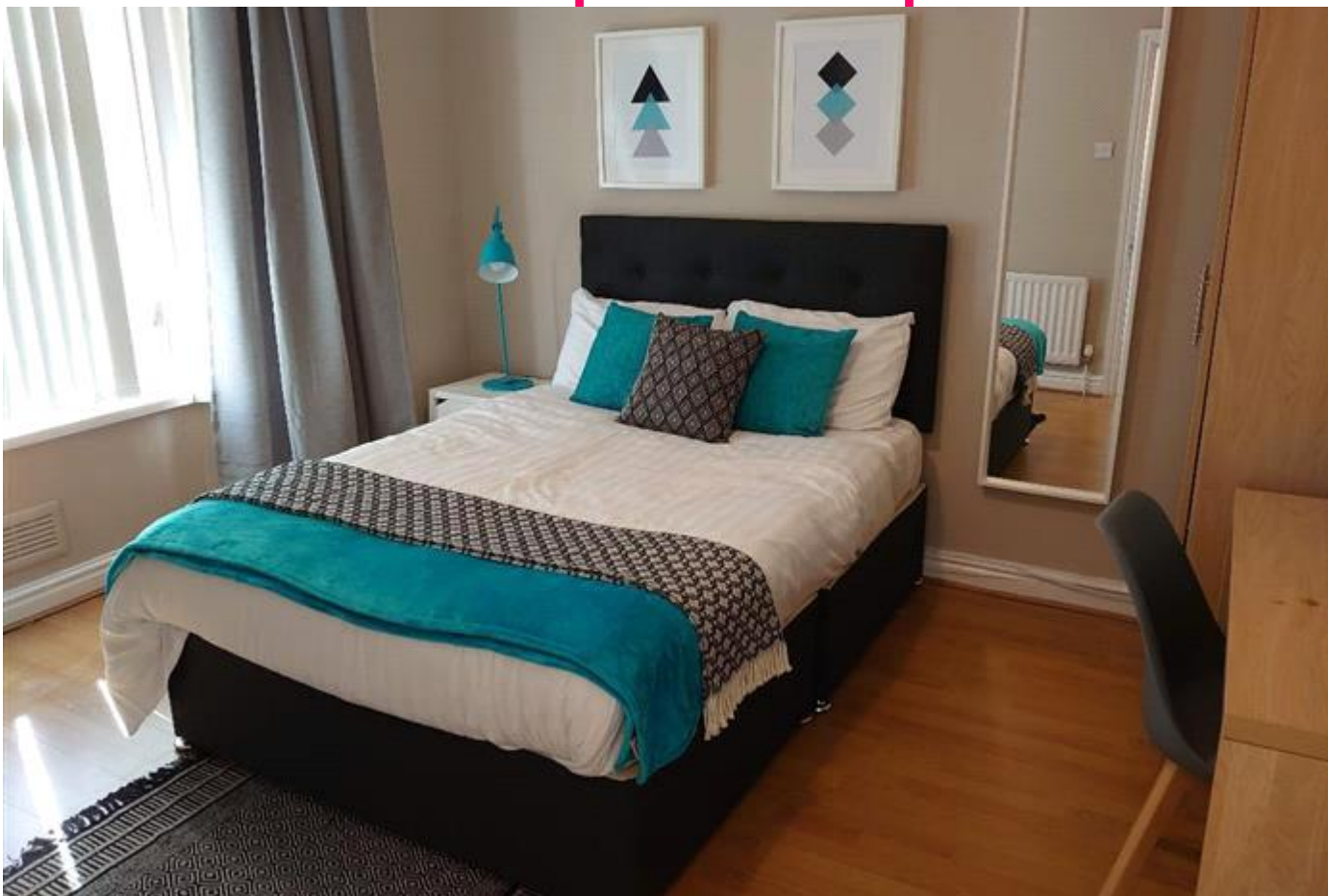


# MTR

Residential Sales & Lettings



Connaught Rd,  
Kensington Fields  
£130 pppw


£130PPPW  
Available 01/07/2025

3 bed property - including gas,  
water, electric and VIRGIN  
BROADBAND!

-Highly desirable location  
(Kenny Fields)  
-Spare study/storage room  
- An incredible £2100 ANNUAL  
ENERGY ALLOWANCE – we  
challenge you to find better!

- Basement
- Bills Included
- Broadband Included
- Close to City Centre
- Double Glazing
- Fitted Bathroom
- Fitted Kitchen
- Flat Screen TV
- Furnished
- Smart TV
- Upstairs Bathroom
- White Goods
- Half rent July/August if not moving in

# Energy Efficiency Rating

	Current	Potential
<i>Very energy efficient - lower running costs</i> (92-100) <b>A</b>		
(81-91) <b>B</b>		89
(69-80) <b>C</b>		
(55-68) <b>D</b>	66	
(39-54) <b>E</b>		
(21-38) <b>F</b>		
(1-20) <b>G</b>		
<i>Not energy efficient - higher running costs</i>		
<b>England &amp; Wales</b>	EU Directive 2002/91/EC	

The energy efficiency rating is a measure of the overall efficiency of a home. The higher the rating the more energy efficient the home is and the lower the fuel bills will be.

Viewing	Strictly by appointment with MTR Sales & Lettings - Head Office
Reference	Telephone 0151 222 1633
Additional Information	RL0092
	Council Tax Band: A (Liverpool City Council (LCC))
	Deposit: £600

Whilst every effort is made to ensure the accuracy of these details, it should be noted that the measurements are approximate only. Floorplans are for representation purposes only and prepared according to the RICS Code of Measuring Practice by our floorplan provider. Therefore, the layout of doors, windows and rooms are approximate and should be regarded as such by any prospective tenant.