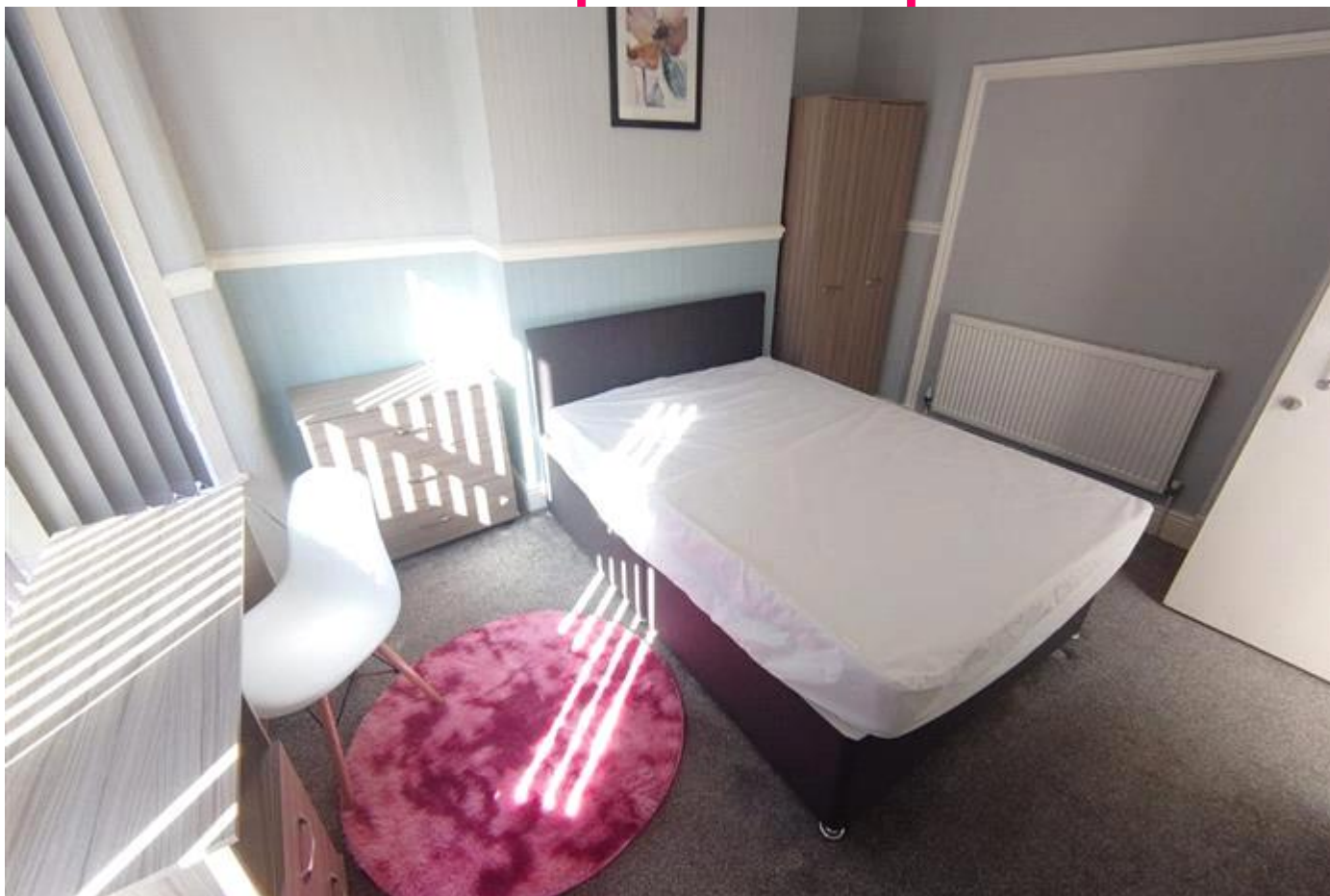


MTFR

Residential Sales & Lettings





Saxony Rd, Kensington
Fields
£125 pppw

£125PPPW
Available 01/07/2025

This practical 4-bed is in the perfect location for student living.

- Bills & Broadband Included
- An incredible £2800 ANNUAL ENERGY ALLOWANCE – we challenge you to find better!

- Bills Included
- Broadband Included
- Carpets Throughout
- Close to Amenities
- Close to City Centre
- Council Tax NOT Included
- Double Glazing
- Fitted Bathroom
- Fitted Kitchen
- Flat Screen TV
- Friendly Landlord
- Furnished
- High Ceilings
- New Refurbishment

Energy Efficiency Rating		Environmental Impact (CO ₂) Rating	
	Current	Potential	
Very energy efficient - lower running costs			Very environmentally friendly - lower CO ₂ emissions
(92-100) A			(92-100) A
(81-91) B		89	(81-91) B
(69-80) C			(69-80) C
(55-68) D	62		(55-68) D
(39-54) E			(39-54) E
(21-38) F			(21-38) F
(1-20) G			(1-20) G
Not energy efficient - higher running costs			Not environmentally friendly - higher CO ₂ emissions
England & Wales	EU Directive 2002/91/EC		England & Wales
			EU Directive 2002/91/EC
			

The energy efficiency rating is a measure of the overall efficiency of a home. The higher the rating the more energy efficient the home is and the lower the fuel bills will be.

The environmental impact rating is a measure of a home's impact on the environment in terms of carbon dioxide (CO₂)

Rent £125 pppw
Viewing Strictly by appointment with MTR Sales & Lettings - Head Office
Telephone 0151 222 1633
Reference RL0198
Council Tax Band: A (Liverpool City Council (LCC))
Additional Information Deposit: £800
Holding Deposit: £125

Whilst every effort is made to ensure the accuracy of these details, it should be noted that the measurements are approximate only. Floorplans are for representation purposes only and prepared according to the RICS Code of Measuring Practice by our floorplan provider. Therefore, the layout of doors, windows and rooms are approximate and should be regarded as such by any prospective tenant.