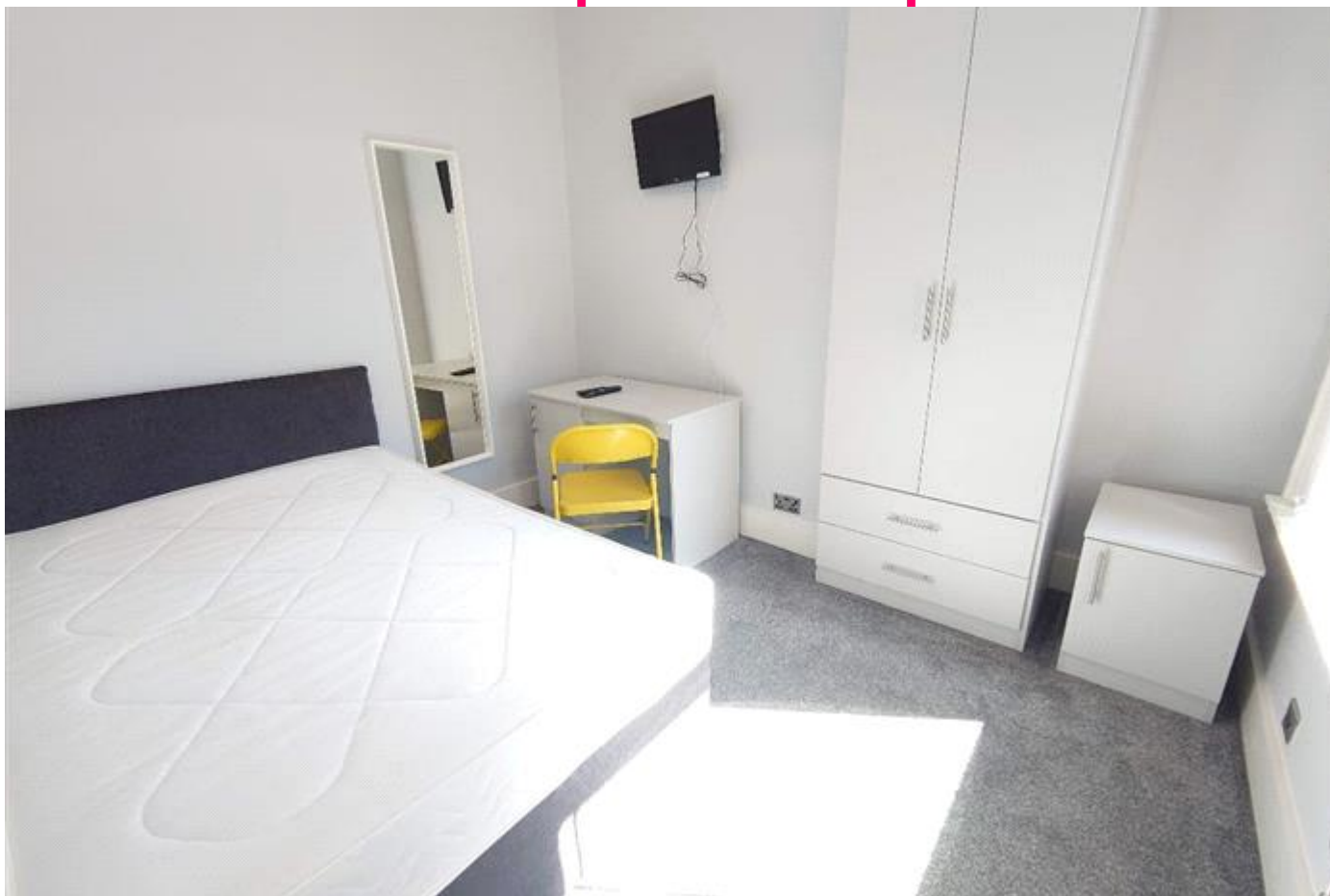


MTR

Residential Sales & Lettings



Malvern Road,
Kensington
£125 pppw


£125PPPW
Available 01/07/2026

Renovated and upgraded
property on Malvern - bills and
broadband included. LARGE,
HIGH-SPEC rooms!

- Very high standard of refurbishment
- Quiet residential street
- An incredible £2800 ANNUAL ENERGY ALLOWANCE
- Broadband included
- No half rent over summer

- Bills Included
- Broadband Included
- Carpet in bedrooms
- Dishwasher
- Double Glazing
- Fitted Bathroom
- Fitted Kitchen
- Flat Screen TV
- Friendly Landlord
- Furnished
- Gas Central Heating
- New Refurbishment
- Tumble Dryer
- TWO Bathrooms

Energy Efficiency Rating

	Current	Potential
<i>Very energy efficient - lower running costs</i> (92-100) A		
(81-91) B		83
(69-80) C		
(55-68) D	55	
(39-54) E		
(21-38) F		
(1-20) G		
<i>Not energy efficient - higher running costs</i>		
England & Wales		EU Directive 2002/91/EC 

The energy efficiency rating is a measure of the overall efficiency of a home. The higher the rating the more energy efficient the home is and the lower the fuel bills will be.

Viewing	Strictly by appointment with MTR Sales & Lettings - Head Office
Reference	Telephone 0151 222 1633
Additional Information	RL0225
	Council Tax Band: A (Liverpool City Council (LCC))
	Deposit: £1,200

Whilst every effort is made to ensure the accuracy of these details, it should be noted that the measurements are approximate only. Floorplans are for representation purposes only and prepared according to the RICS Code of Measuring Practice by our floorplan provider. Therefore, the layout of doors, windows and rooms are approximate and should be regarded as such by any prospective tenant.