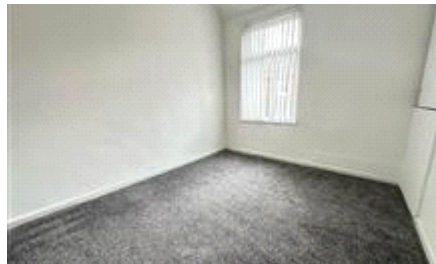


# MTFR

Residential Sales & Lettings




Hawkins Street  
£850 pcm

Redecorated and spacious  
property on Hawkins Street!

Just outside Liverpool City  
Centre, this unfurnished  
property is ideal for small  
families.

- Bills Exclusive
- Close to Amenities
- Close to City Centre
- Council Tax NOT Included
- Double Glazing
- Fitted Bathroom
- Fitted Kitchen
- On-street parking
- Professional Property
- Wooden Floors

# Energy Efficiency Rating

	Current	Potential
<i>Very energy efficient - lower running costs</i> (92-100) <b>A</b>		
(81-91) <b>B</b>		<b>88</b>
(69-80) <b>C</b>	<b>71</b>	
(55-68) <b>D</b>		
(39-54) <b>E</b>		
(21-38) <b>F</b>		
(1-20) <b>G</b>		
<i>Not energy efficient - higher running costs</i>		
<b>England &amp; Wales</b>	EU Directive 2002/91/EC	

The energy efficiency rating is a measure of the overall efficiency of a home. The higher the rating the more energy efficient the home is and the lower the fuel bills will be.

Viewing	Strictly by appointment with MTR Sales & Lettings - Head Office
	Telephone 0151 222 1633
Reference	RL0278
	Council Tax Band: A (Liverpool City Council (LCC))
Additional Information	Deposit: £850
	Holding Deposit: £196.15

Whilst every effort is made to ensure the accuracy of these details, it should be noted that the measurements are approximate only. Floorplans are for representation purposes only and prepared according to the RICS Code of Measuring Practice by our floorplan provider. Therefore, the layout of doors, windows and rooms are approximate and should be regarded as such by any prospective tenant.