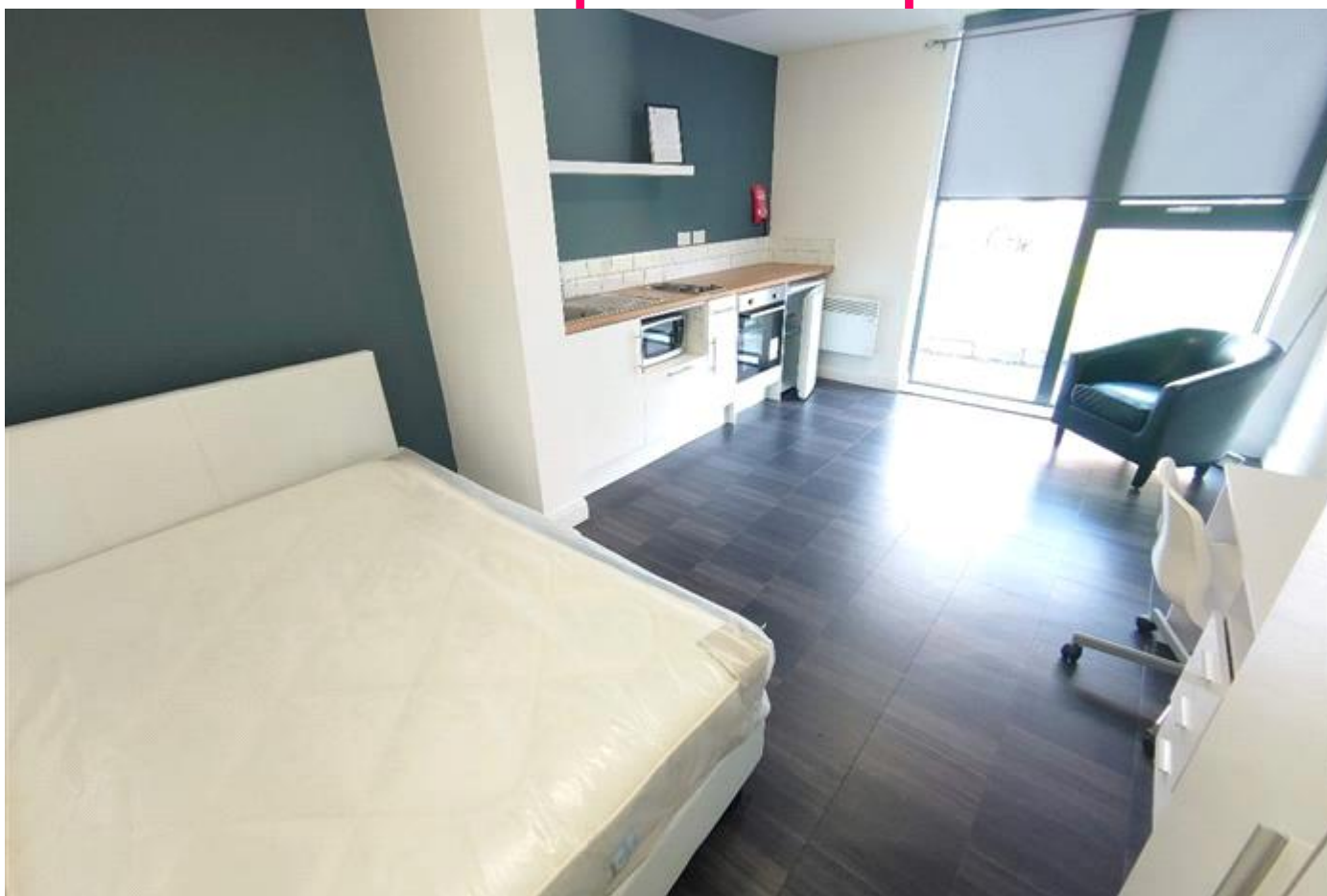


MTR

Residential Sales & Lettings



St Cyprian's Church
£155 pppw

£155 PPPW
Available 01/07/2025


Simple and sensible studio flat
on Edge Lane.

ONLY AVAILABLE FOR FULL-TIME STUDENTS! ALL BILLS INCLUDED - UNLIMITED

- £155 per week
- 5 mins walk to town
- Major bus routes via Edge Lane
- 5 mins to Edge Hill Station

- Bills Included
- Close to Amenities
- Close to City Centre
- Council Tax NOT Included
- Double Glazing
- Ensuite Bathroom
- Furnished
- Gym
- High Ceilings

Energy Efficiency Rating

	Current	Potential
<i>Very energy efficient - lower running costs</i> (92-100) A		
(81-91) B		
(69-80) C	78	80
(55-68) D		
(39-54) E		
(21-38) F		
(1-20) G		
<i>Not energy efficient - higher running costs</i>		
England & Wales	EU Directive 2002/91/EC	

The energy efficiency rating is a measure of the overall efficiency of a home. The higher the rating the more energy efficient the home is and the lower the fuel bills will be.

Viewing	Strictly by appointment with MTR Sales & Lettings - Head Office
	Telephone 0151 222 1633
Reference	RL0304
	Council Tax Band: A (Liverpool City Council (LCC))
Additional Information	Deposit: £200
	Holding Deposit: £150

Whilst every effort is made to ensure the accuracy of these details, it should be noted that the measurements are approximate only. Floorplans are for representation purposes only and prepared according to the RICS Code of Measuring Practice by our floorplan provider. Therefore, the layout of doors, windows and rooms are approximate and should be regarded as such by any prospective tenant.