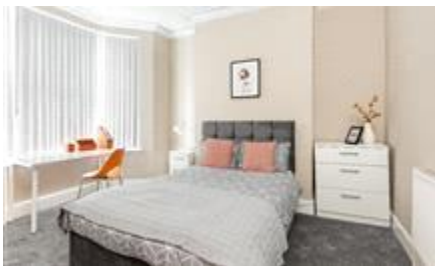


MTFR

Residential Sales & Lettings



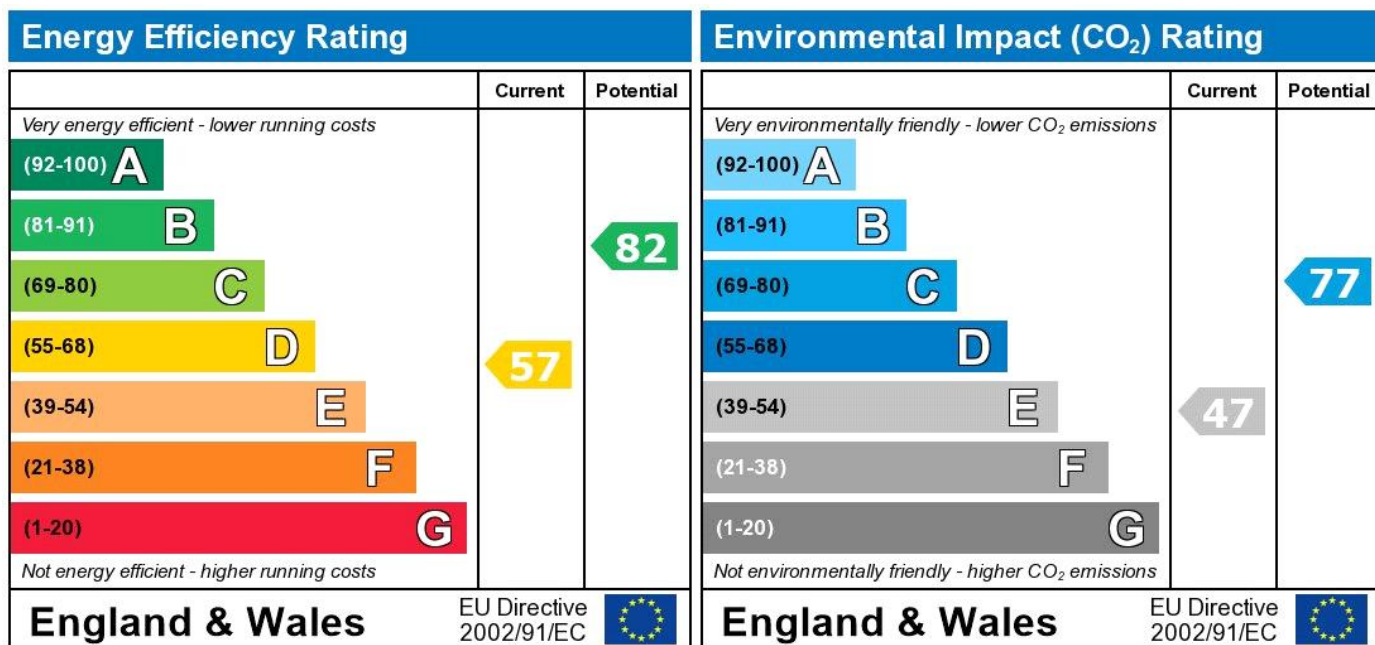
Kensington, Liverpool
£135 pppw

£135PPPW

REFURBISHED PROPERTY -
VERY SPACIOUS!

5 Large Bedrooms - 2
Bathrooms - Large communal
space.
-5 mins to Uni
-Walking distance to Concert
Square
-Dishwasher/Tumble
Dryer/American Fridge Freezer
-Bills Included
-An incredible £3500 ANNUAL

- Access to yard
- Additional WC
- Basement
- Bills Included
- Broadband Included
- Carpet in bedrooms
- Close to Amenities
- Close to City Centre
- Dining Area
- Dishwasher
- Double Cooker
- Double Glazing
- Furnished
- Gas Central Heating



The energy efficiency rating is a measure of the overall efficiency of a home. The higher the rating the more energy efficient the home is and the lower the fuel bills will be.

The environmental impact rating is a measure of a home's impact on the environment in terms of carbon dioxide (CO₂)

Rent	£135 pppw
Viewing	Strictly by appointment with MTR Sales & Lettings - Head Office
Reference	Telephone 0151 222 1633
Additional Information	RL0400
	Council Tax Band: A (Liverpool City Council (LCC))
	Deposit: £1,000

Whilst every effort is made to ensure the accuracy of these details, it should be noted that the measurements are approximate only. Floorplans are for representation purposes only and prepared according to the RICS Code of Measuring Practice by our floorplan provider. Therefore, the layout of doors, windows and rooms are approximate and should be regarded as such by any prospective tenant.