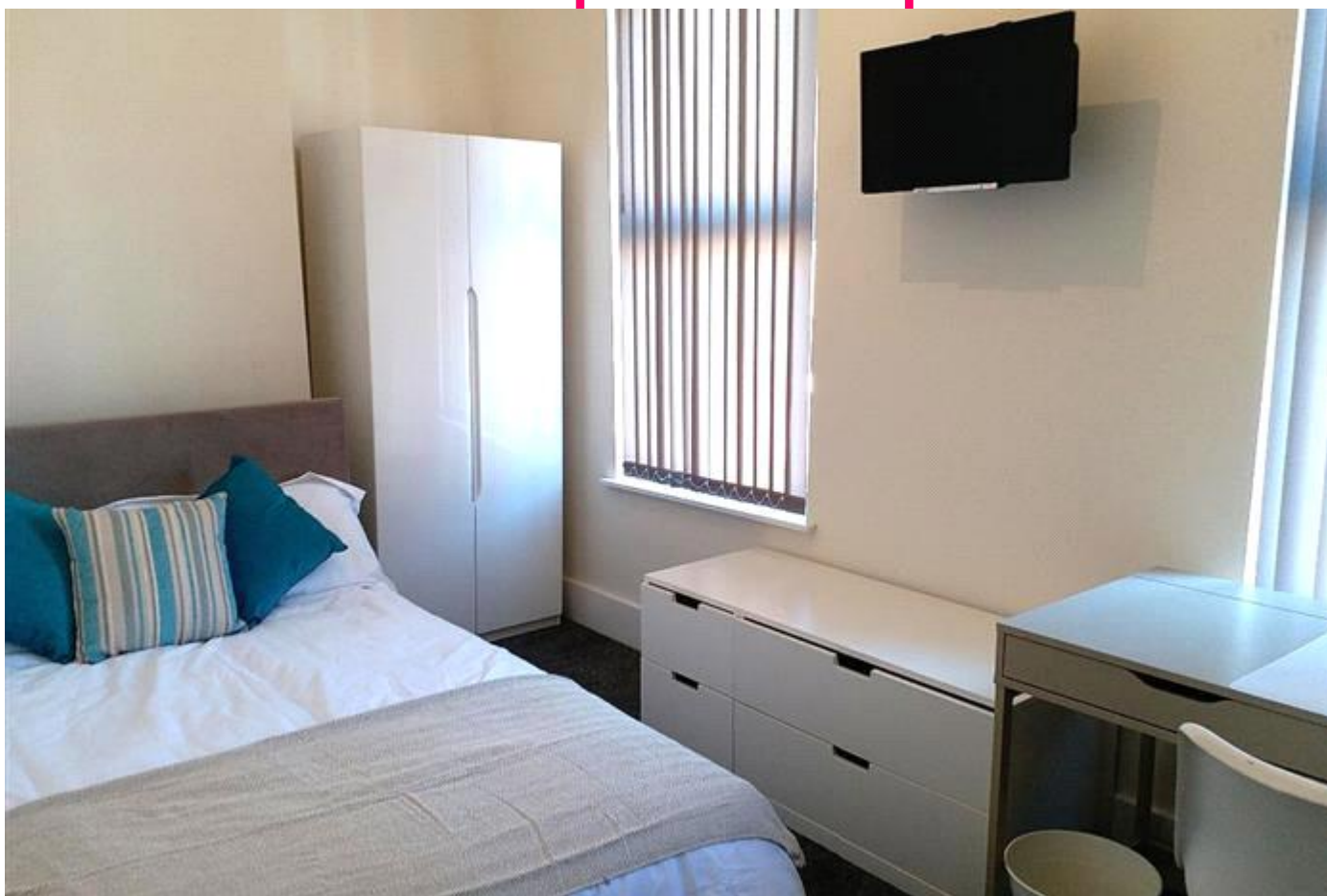


MTR

Residential Sales & Lettings




Romer Road, Liverpool
£105 pppw

£105PPPW
Available 01/07/2025

4 Bed - Romer Road

- Recently refurbished
- Homely feel
- Good size bedrooms
- Washing machine, tumble AND dishwasher
- Bills included
- An incredible £2800 ANNUAL ENERGY ALLOWANCE – we challenge you to find better!
- Broadband Included

Energy Efficiency Rating

	Current	Potential
<i>Very energy efficient - lower running costs</i> (92-100) A		
(81-91) B		87
(69-80) C		
(55-68) D	67	
(39-54) E		
(21-38) F		
(1-20) G		
<i>Not energy efficient - higher running costs</i>		
England & Wales	EU Directive 2002/91/EC	

The energy efficiency rating is a measure of the overall efficiency of a home. The higher the rating the more energy efficient the home is and the lower the fuel bills will be.

Viewing	Strictly by appointment with MTR Sales & Lettings - Head Office
Reference	Telephone 0151 222 1633
Additional Information	RL0691
	Council Tax Band: A (Liverpool City Council (LCC))
	Deposit: £800

Whilst every effort is made to ensure the accuracy of these details, it should be noted that the measurements are approximate only. Floorplans are for representation purposes only and prepared according to the RICS Code of Measuring Practice by our floorplan provider. Therefore, the layout of doors, windows and rooms are approximate and should be regarded as such by any prospective tenant.