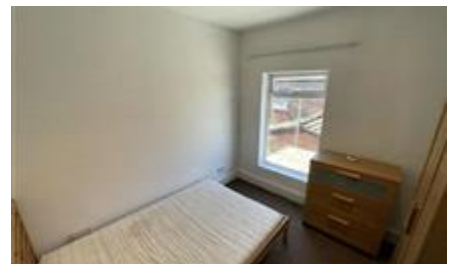


# MTFR

Residential Sales & Lettings




Battenberg Street,  
Liverpool  
£165 pppw

- Two bed on Battenberg St
- Two bathroom (one ensuite)
- Currently being upgraded
- Available from June/July
- Bills Included
- No half rent discount over the summer

- Bills Included
- Broadband Included
- Carpet in bedrooms
- Close to Amenities
- Close to City Centre
- Double Glazing
- Ensuite Shower
- Fitted Bathroom
- Fitted Kitchen
- Furnished
- Gas Central Heating
- No half rent - full rent due for the term

# Energy Efficiency Rating

	Current	Potential
<i>Very energy efficient - lower running costs</i> <b>(92+) A</b>		
<b>(81-91) B</b>		<b>85</b>
<b>(69-80) C</b>		
<b>(55-68) D</b>	<b>64</b>	
<b>(39-54) E</b>		
<b>(21-38) F</b>		
<b>(1-20) G</b>		
<i>Not energy efficient - higher running costs</i>		
<b>England &amp; Wales</b>	EU Directive 2002/91/EC	

The energy efficiency rating is a measure of the overall efficiency of a home. The higher the rating the more energy efficient the home is and the lower the fuel bills will be.

Viewing	Strictly by appointment with MTR Sales & Lettings - Head Office
Reference	Telephone 0151 222 1633
Additional Information	RL0833
	Council Tax Band: A (Liverpool City Council (LCC))
	Deposit: £600

Whilst every effort is made to ensure the accuracy of these details, it should be noted that the measurements are approximate only. Floorplans are for representation purposes only and prepared according to the RICS Code of Measuring Practice by our floorplan provider. Therefore, the layout of doors, windows and rooms are approximate and should be regarded as such by any prospective tenant.