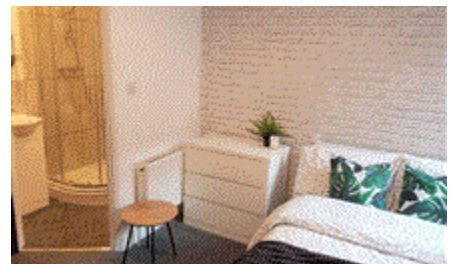
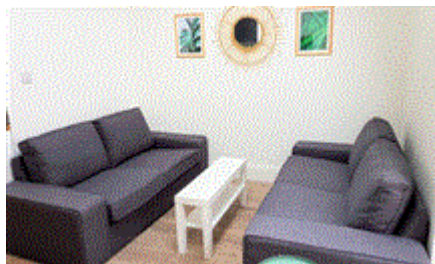
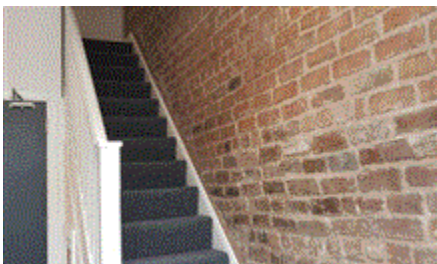


MTFR

Residential Sales & Lettings




Esher Road, Liverpool
£130 pw

£130 PPPW
Available 01/07/2024

Large 3 bedrooms available in this 6 bedroom property available - ALL ENSUITES!
-Within walking distance of City Centre
-Several arterial bus routes nearby
-No parking restrictions

- Professional or Student property
- Bills Included
- Close to City Centre
- Ensuite Bathroom
- Fitted Kitchen
- Friendly Landlord
- Furnished
- Gas Central Heating
- Half rent July/August if not moving in
- On-street parking

Energy Efficiency Rating

	Current	Potential
<i>Very energy efficient - lower running costs</i> (92-100) A		
(81-91) B		86
(69-80) C	75	
(55-68) D		
(39-54) E		
(21-38) F		
(1-20) G		
<i>Not energy efficient - higher running costs</i>		
England & Wales	EU Directive 2002/91/EC	

The energy efficiency rating is a measure of the overall efficiency of a home. The higher the rating the more energy efficient the home is and the lower the fuel bills will be.

Viewing	Strictly by appointment with MTR Sales & Lettings - Head Office
Reference	Telephone 0151 222 1633
Additional Information	RL0840
	Council Tax Band: A (Liverpool City Council)
	Deposit: £1,800

Whilst every effort is made to ensure the accuracy of these details, it should be noted that the measurements are approximate only. Floorplans are for representation purposes only and prepared according to the RICS Code of Measuring Practice by our floorplan provider. Therefore, the layout of doors, windows and rooms are approximate and should be regarded as such by any prospective tenant.