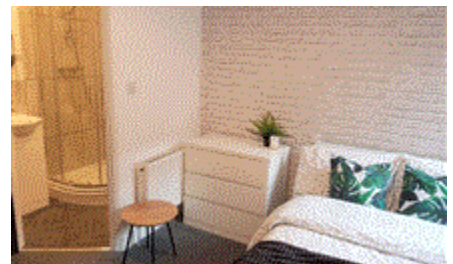
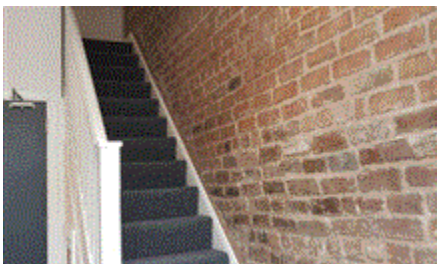


MTFR

Residential Sales & Lettings




Esher Road, Liverpool
£115 pw

£115 PPPW
Available 01/07/2024

rooms available in this 6
bedroom property available -
ALL ENSUITES!
-Within walking distance of City
Centre
-Several arterial bus routes
nearby
-No parking restrictions

- Bills Included
- Close to City Centre
- Ensuite Bathroom
- Fitted Kitchen
- Friendly Landlord
- Furnished
- Gas Central Heating
- Half rent July/August if not moving in
- On-street parking
- Professional or Student property

Energy Efficiency Rating

	Current	Potential
<i>Very energy efficient - lower running costs</i> (92-100) A		
(81-91) B		86
(69-80) C	75	
(55-68) D		
(39-54) E		
(21-38) F		
(1-20) G		
<i>Not energy efficient - higher running costs</i>		
England & Wales	EU Directive 2002/91/EC	

The energy efficiency rating is a measure of the overall efficiency of a home. The higher the rating the more energy efficient the home is and the lower the fuel bills will be.

Viewing	Strictly by appointment with MTR Sales & Lettings - Head Office
	Telephone 0151 222 1633
Reference	RL0845
	Council Tax Band: A (Liverpool City Council (LCC))
Additional Information	Deposit: £300
	Holding Deposit: £130

Whilst every effort is made to ensure the accuracy of these details, it should be noted that the measurements are approximate only. Floorplans are for representation purposes only and prepared according to the RICS Code of Measuring Practice by our floorplan provider. Therefore, the layout of doors, windows and rooms are approximate and should be regarded as such by any prospective tenant.