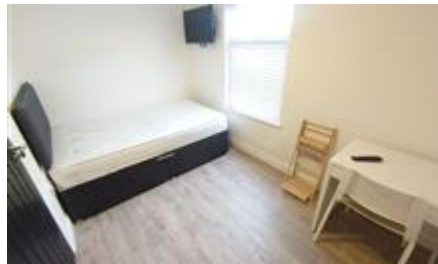


# MTFR

Residential Sales & Lettings




Bed 4, Selkirk Road,  
Liverpool  
£135 pppw

Refurbished 5 bed ensuite on  
Binns Road. Individual rooms  
available.

- Close to retail park
- Close to amenities
- On road parking
- ENSUITES

## Energy Efficiency Rating

	Current	Potential
<i>Very energy efficient - lower running costs</i> <b>(92+) A</b>		
<b>(81-91) B</b>		<b>86</b>
<b>(69-80) C</b>		
<b>(55-68) D</b>	<b>59</b>	
<b>(39-54) E</b>		
<b>(21-38) F</b>		
<b>(1-20) G</b>		
<i>Not energy efficient - higher running costs</i>		
<b>England &amp; Wales</b>	EU Directive 2002/91/EC	

The energy efficiency rating is a measure of the overall efficiency of a home. The higher the rating the more energy efficient the home is and the lower the fuel bills will be.

Viewing	Strictly by appointment with MTR Sales & Lettings - Head Office
Reference	Telephone 0151 222 1633
	RL1090
Additional Information	Council Tax Band: A (Liverpool City Council (LCC))
	Deposit: £585
	Garden details: Rear Garden

Whilst every effort is made to ensure the accuracy of these details, it should be noted that the measurements are approximate only. Floorplans are for representation purposes only and prepared according to the RICS Code of Measuring Practice by our floorplan provider. Therefore, the layout of doors, windows and rooms are approximate and should be regarded as such by any prospective tenant.