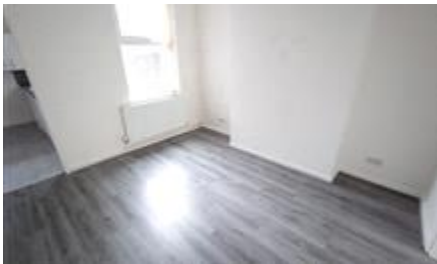


# MTFR


Residential Sales & Lettings



St. Andrew Road,  
Liverpool  
£875 pcm

Fantastic 2 bed family home on  
St Andrew Road - freshly  
refurbished.

## Energy Efficiency Rating

	Current	Potential
<i>Very energy efficient - lower running costs</i> <b>(92+) A</b>		
<b>(81-91) B</b>		<b>88</b>
<b>(69-80) C</b>	<b>69</b>	
<b>(55-68) D</b>		
<b>(39-54) E</b>		
<b>(21-38) F</b>		
<b>(1-20) G</b> <i>Not energy efficient - higher running costs</i>		
<b>England &amp; Wales</b>	EU Directive 2002/91/EC	

The energy efficiency rating is a measure of the overall efficiency of a home. The higher the rating the more energy efficient the home is and the lower the fuel bills will be.

Viewing	Strictly by appointment with MTR Sales & Lettings - Head Office
Reference	Telephone 0151 222 1633
	RL1178
	Council Tax Band: A (Liverpool City Council (LCC))
Additional Information	Deposit: £875
	Holding Deposit: £201.92
	Garden details: Terrace

Whilst every effort is made to ensure the accuracy of these details, it should be noted that the measurements are approximate only. Floorplans are for representation purposes only and prepared according to the RICS Code of Measuring Practice by our floorplan provider. Therefore, the layout of doors, windows and rooms are approximate and should be regarded as such by any prospective tenant.