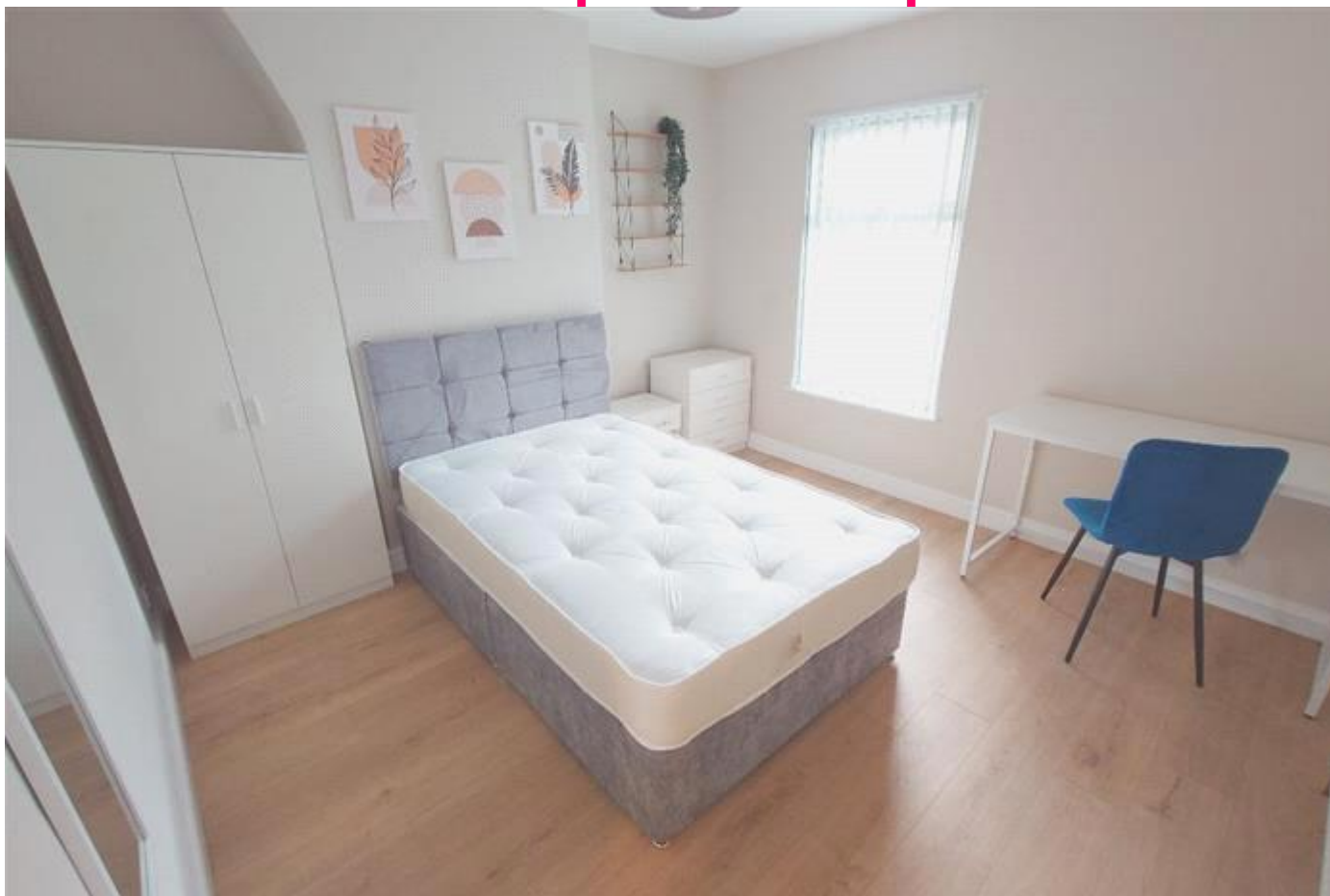


# MTFR

Residential Sales & Lettings





Leopold Rd, Kensington  
Fields  
£135 pppw

£135 pppw – 5-Bed Property  
on Leopold Road, Available  
01/09/2026

Refurb planned!

Perfect for students, this property includes gas, water, electricity, and broadband with a generous £2100 annual energy allowance! Located just minutes from campus, it's the ideal home for comfort and convenience

- Bills Included
- Broadband Included
- Close to Amenities
- Close to City Centre
- Double Glazing
- Fitted Bathroom
- Fitted Kitchen
- Flat Screen TV
- Gas Central Heating
- Half rent July/August if not moving in
- Upstairs Bathroom
- Virgin Broadband
- White Goods

Energy Efficiency Rating		Environmental Impact (CO <sub>2</sub> ) Rating	
	Current	Potential	
Very energy efficient - lower running costs			Very environmentally friendly - lower CO <sub>2</sub> emissions
(92-100) <b>A</b>			(92-100) <b>A</b>
(81-91) <b>B</b>			(81-91) <b>B</b>
(69-80) <b>C</b>		<b>76</b>	(69-80) <b>C</b>
(55-68) <b>D</b>	<b>54</b>		(55-68) <b>D</b>
(39-54) <b>E</b>			(39-54) <b>E</b>
(21-38) <b>F</b>			(21-38) <b>F</b>
(1-20) <b>G</b>			(1-20) <b>G</b>
Not energy efficient - higher running costs			Not environmentally friendly - higher CO <sub>2</sub> emissions
<b>England &amp; Wales</b>	EU Directive 2002/91/EC		<b>England &amp; Wales</b>
			EU Directive 2002/91/EC
			

The energy efficiency rating is a measure of the overall efficiency of a home. The higher the rating the more energy efficient the home is and the lower the fuel bills will be.

The environmental impact rating is a measure of a home's impact on the environment in terms of carbon dioxide (CO<sub>2</sub>)

Rent £135 pppw  
Viewing Strictly by appointment with MTR Sales & Lettings - Head Office  
Telephone 0151 222 1633  
Reference RL1219  
Additional Information Council Tax Band: A (Liverpool City Council (LCC))  
Deposit: £1,200

Whilst every effort is made to ensure the accuracy of these details, it should be noted that the measurements are approximate only. Floorplans are for representation purposes only and prepared according to the RICS Code of Measuring Practice by our floorplan provider. Therefore, the layout of doors, windows and rooms are approximate and should be regarded as such by any prospective tenant.