



22 Milton Grove

, London, N16 8QS

£2,300



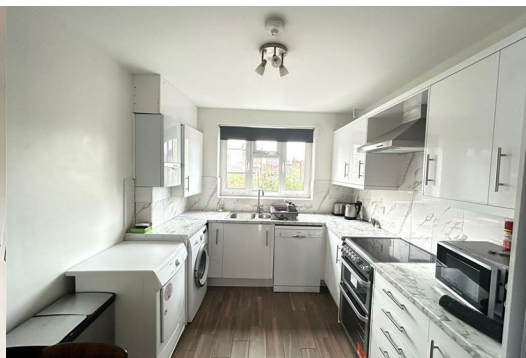
We are excited to present this charming 2-bedroom, 1-bathroom flat, perfectly situated in a sought-after location.

This bright and spacious property will be available for occupancy starting October 14th 2024, and is offered unfurnished, allowing you to make it your own.

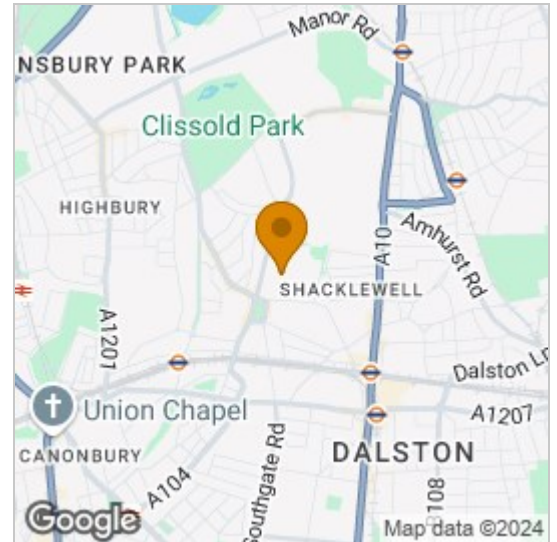
Key Details:

Minimum Tenancy: 12 months
Maximum Tenants: 2

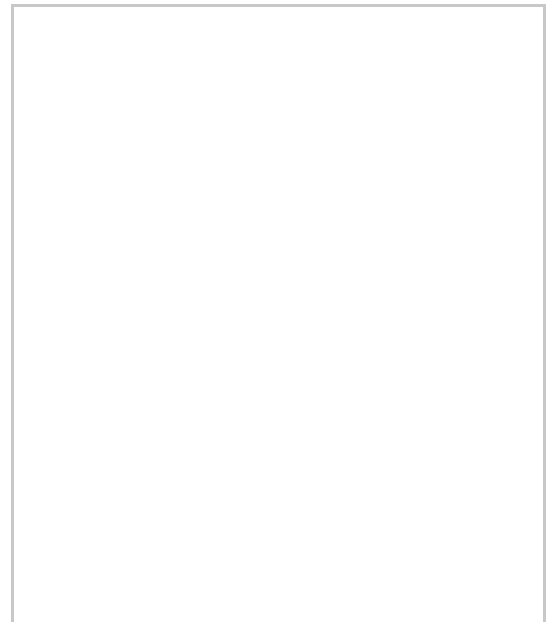
Transport Links: Newington Green is well-connected with several bus routes providing easy access to Central London, as well as neighboring areas like Dalston, Highbury, and Stoke Newington. Canonbury Overground Station and Dalston Kingsland are also within walking distance.



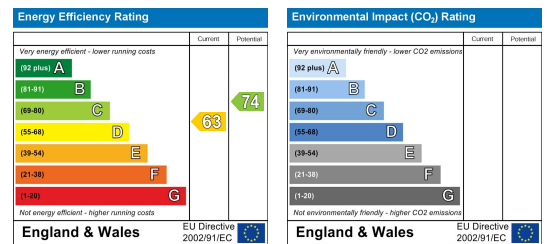
Area Map



Floor Plans



Energy Efficiency Graph



These particulars, whilst believed to be accurate are set out as a general outline only for guidance and do not constitute any part of an offer or contract. Intending purchasers should not rely on them as statements of representation of fact, but must satisfy themselves by inspection or otherwise as to their accuracy. No person in this firm's employment has the authority to make or give any representation or warranty in respect of the property.