



20 Middleton Close

, London, E4 8EA

£3,000

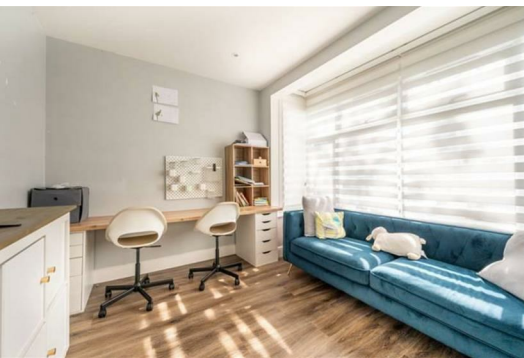


Zuplex Estate Agents proudly presents this stunning family home, tucked away in a peaceful cul-de-sac, conveniently positioned near both Chingford Mount and North Chingford. This immaculate four-bedroom terraced house features fully fitted kitchen, a rear extension, and an open-plan kitchen/diner with sliding French doors that open to a beautifully landscaped garden. The property also includes a ground-floor laundry room and W.C.

First Floor: Three spacious double bedrooms, two of which feature built-in wardrobes, and a fully tiled family bathroom. The second floor offers a versatile fourth bedroom or loft room, complete with ample eaves storage and wardrobe space.

The rear garden boasts a wooden decked area, a large outhouse with a convenient kitchenette equipped with electricity and water, and access to the property via a private service road. The front of the property offers off-street parking with a double driveway, and additional parking at the rear via the service road.

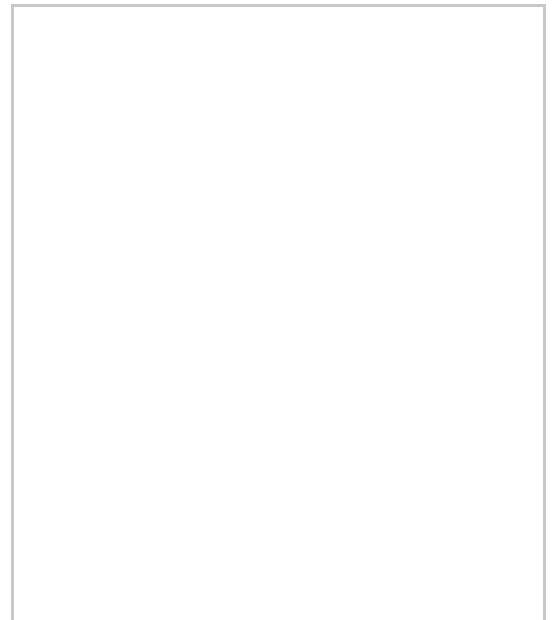
Located on Middleton Close, a quiet residential street, the property is ideally situated within a mile of Highams Park Station, providing a fast commute to Liverpool Street in under 20 minutes. The A406 is also nearby,



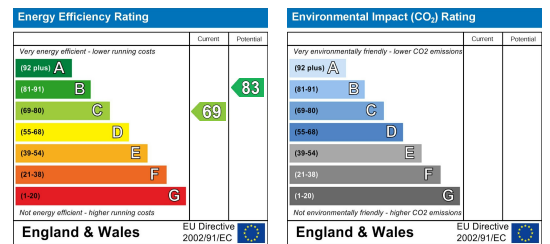
Area Map



Floor Plans



Energy Efficiency Graph



These particulars, whilst believed to be accurate are set out as a general outline only for guidance and do not constitute any part of an offer or contract. Intending purchasers should not rely on them as statements of representation of fact, but must satisfy themselves by inspection or otherwise as to their accuracy. No person in this firm's employment has the authority to make or give any representation or warranty in respect of the property.