



7 Kipling Terrace Great Cambridge Road

, London, N9 9UJ

£2,200

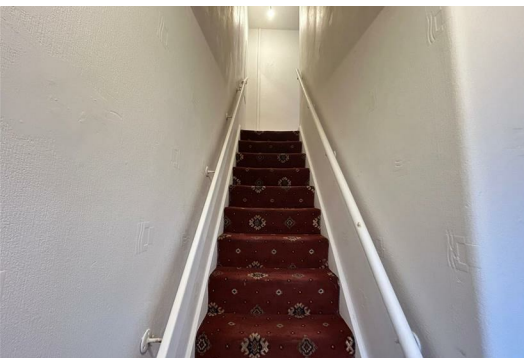


We are pleased to present this spacious, unfurnished 3-bedroom, 2-reception house available for immediate rental in the sought-after area of Kipling Terrace, N9. This charming home offers ample space for a growing family or professionals looking for a comfortable and convenient living space.

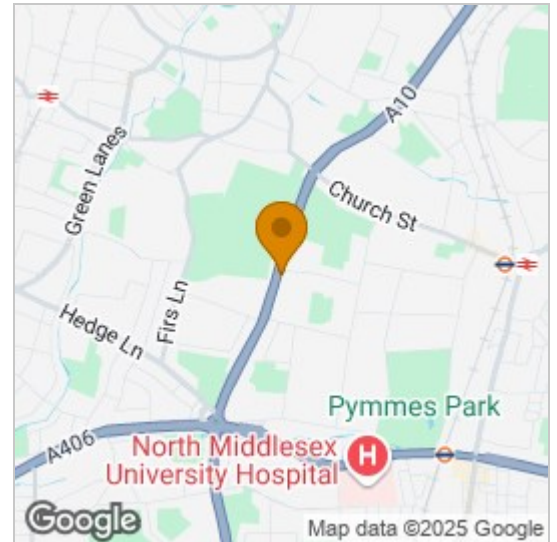
Situated in the desirable area of Kipling Terrace, N9, this property benefits from a prime location with great access to local amenities. The house is within walking distance of local shops, cafes, and schools, making it ideal for families. For commuters, the property is well connected by public transport, with easy access to bus routes and the nearby train station offering direct links to central London.

One month rent and five weeks deposit is required.

Available now.



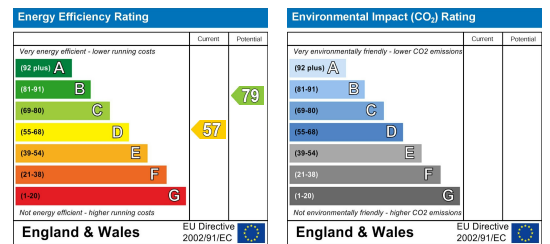
Area Map



Floor Plans



Energy Efficiency Graph



These particulars, whilst believed to be accurate are set out as a general outline only for guidance and do not constitute any part of an offer or contract. Intending purchasers should not rely on them as statements of representation of fact, but must satisfy themselves by inspection or otherwise as to their accuracy. No person in this firm's employment has the authority to make or give any representation or warranty in respect of the property.