

AVAILABLE



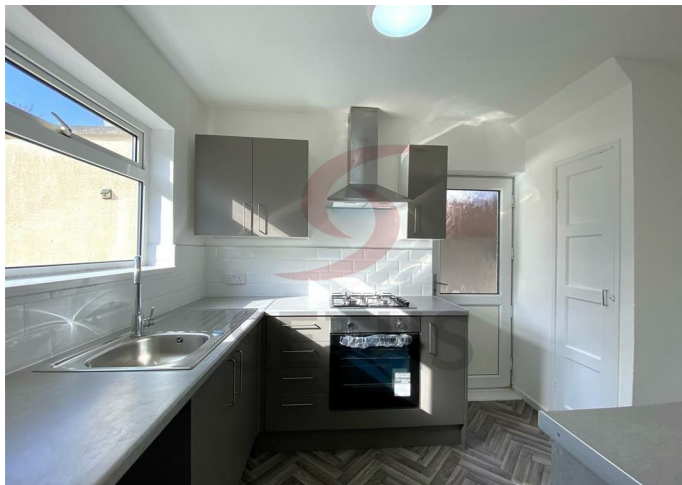
House - Semi-Detached

BARRY ROAD LEICESTER LE5 1FA

£975 PCM

FEATURES

- 2 Double Bedrooms
- BRAND NEW Bathroom
- Close To Local Schools
- Off Road Parking
- Large Lounge Room
- BRAND NEW Kitchen
- REFURBISHED AND REDECORATED
- Spacious Garden



 **SETHS**

2 Bedroom House - Semi-Detached located in Leicester

Seth's are proud to market this NEWLY REFURBSIHED Spacious Two Bedroom Semi-Detached family home in Barry Road, Netherhall.

Briefly the property comprises of an Entrance Hallway providing access to the the Lounge and 1st Floor.

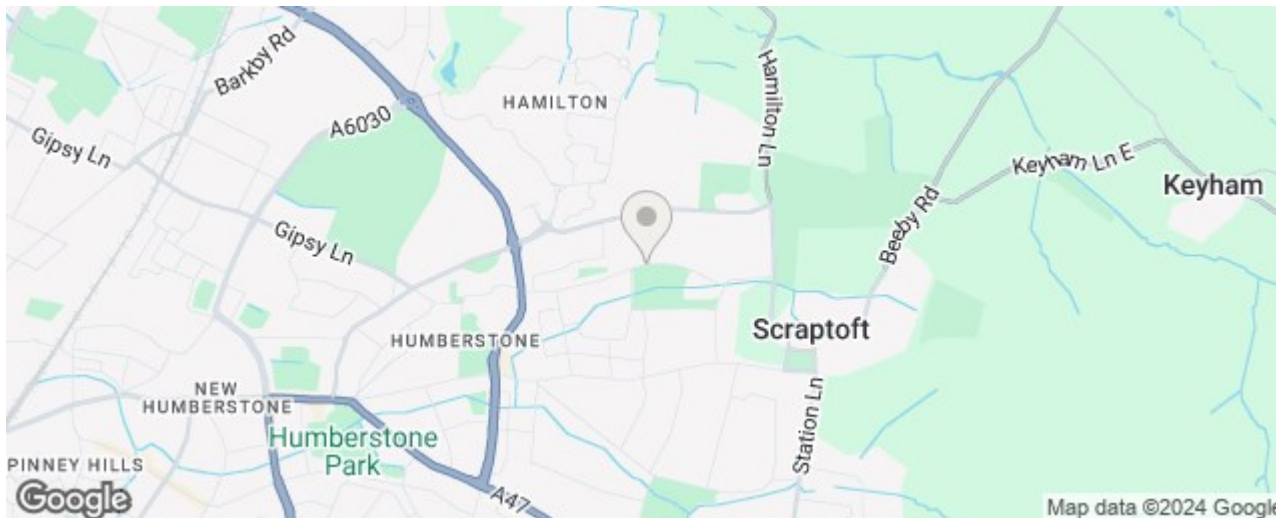
On the ground floor, you walk into the Airy Lounge, followed by the BRAND NEW Fitted Kitchen which consists of an Integrated New Electric Oven and Gas Hob.

On the First Floor there are Two Double Bedrooms, Newly Refurbished Bathroom is fitted with a a Bath with Shower Over, WC and Wash Basin, completed Partial Tiling.

Barry Road is situated near to all local shops, schools and amenities. Scraftoft Golf Course is close by and the Tesco Superstore at Hamilton is a short drive away. The area is well served by bus routes and Local Schools with in Walking Distance.

The whole property benefits from Gas Central Heating, Double Glazing throughout, Spacious Garden to the Rear and Off Road Parking to the Front. This home has been completely Refurbished with Freshly Painted Walls, and Newly Laid Carpets.

Rent: £975PCM
 Security Deposit: £1125
 Tenancy Length: 6 Months
 Council Tax Band: A

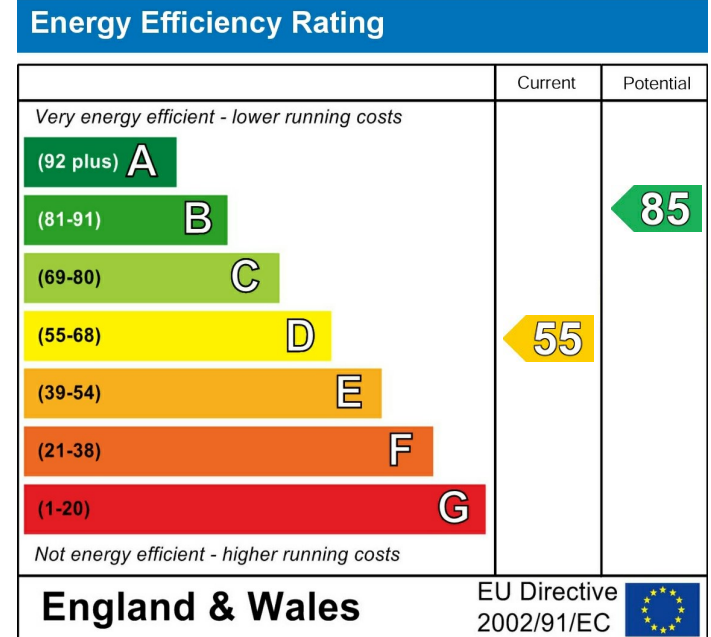


Call us on
 0116 266 9977

let@seths.co.uk
 www.seths.co.uk

Council Tax Band

A



Agents Note: Whilst every care has been taken to prepare these particulars, they are for guidance purposes only. All measurements are approximate and are for general guidance purposes only and whilst every care has been taken to ensure their accuracy, they should not be relied upon and potential buyers are advised to recheck the measurements.

