

AVAILABLE



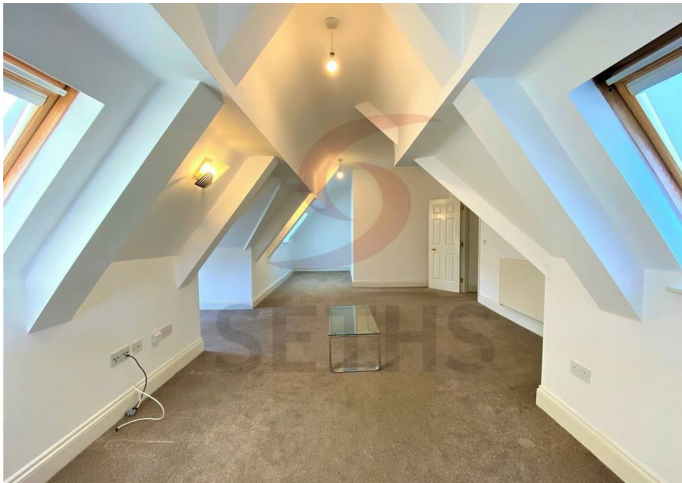
Apartment

# RATCLIFFE ROAD LEICESTER LE2 3TB

## £1,200 PCM

### FEATURES

- Prime Location
- Ensuite
- Unique Design
- Washer Dryer
- Two Double Bedrooms
- Open Plan Lounge/Diner
- Dishwasher
- Off Street Parking



# 2 Bedroom Apartment located in Leicester

Seths are proud to market this beautiful 2 Bedroom Apartment located on Ratcliffe Road in the beautiful Stoneygate area.

This beautiful apartment consists of a Larger than Average open Plan Lounge and Kitchen. The Kitchen consists of Fitted Units with Worktops, Integrated Fridge and Integrated Freezer, Integrated Washer/Dryer and Integrated Dishwasher. There is also a Hob with an Electric Oven.

There are 2 bedrooms, one of which is an En-suite inclusive of Wash Basin, W.C. and Shower Cubicle.

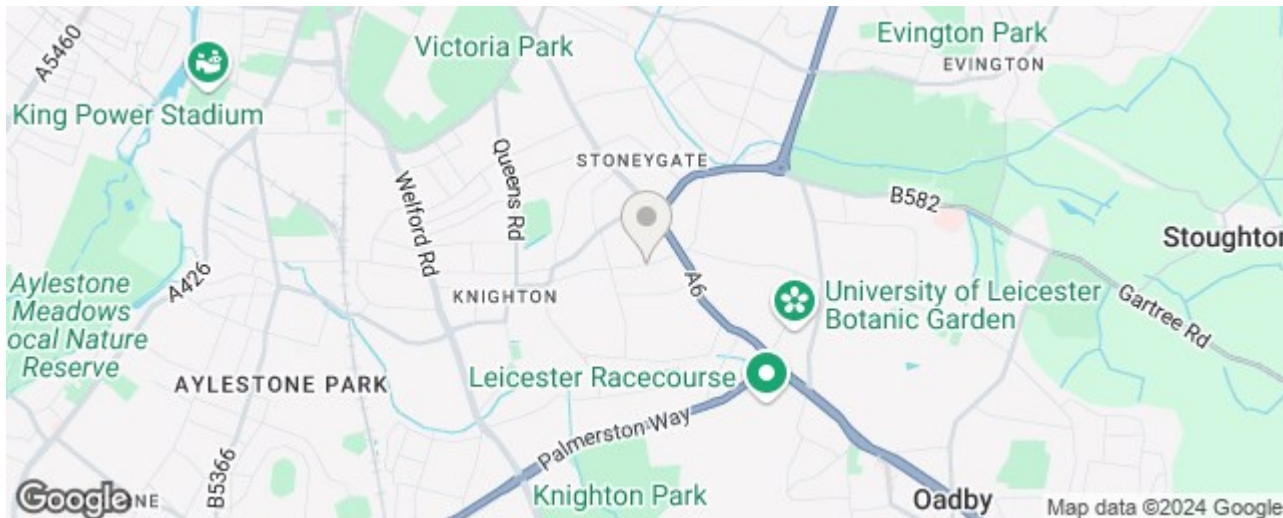
There is also a Fitted Bathroom inclusive of Bath with Shower Over, Wash Basin and W.C. There is one Car Parking Space in the Front Car Park. There is a private garden to the rear with a Padlocked Gate.

Rent: £1200 PCM

Security Deposit: £1,380

Tenancy Length: 6 or 12 Months

Council Tax Band: E



Call us on

0116 266 9977

let@seths.co.uk

www.seths.co.uk

Council Tax Band

E

## Energy Efficiency Rating

	Current	Potential
Very energy efficient - lower running costs		
(92 plus) <b>A</b>		
(81-91) <b>B</b>	79	82
(69-80) <b>C</b>		
(55-68) <b>D</b>		
(39-54) <b>E</b>		
(21-38) <b>F</b>		
(1-20) <b>G</b>		
Not energy efficient - higher running costs		
<b>England &amp; Wales</b>	EU Directive 2002/91/EC	

Agents Note: Whilst every care has been taken to prepare these particulars, they are for guidance purposes only. All measurements are approximate and are for general guidance purposes only and whilst every care has been taken to ensure their accuracy, they should not be relied upon and potential buyers are advised to recheck the measurements.