

LET AGREED



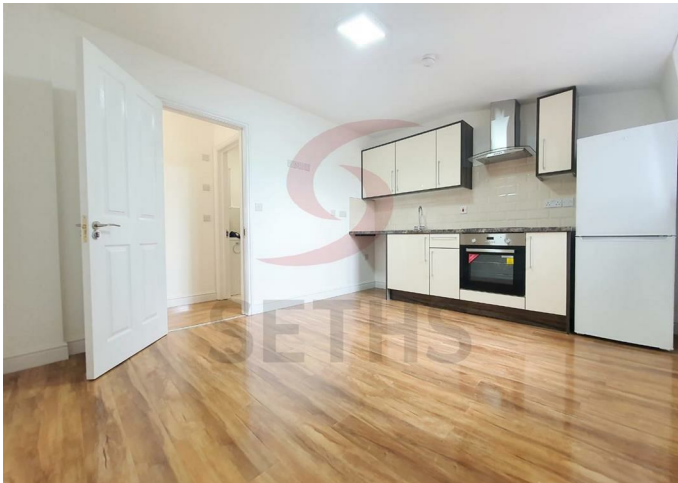
Apartment

WAND STREET LEICESTER LE4 5BT

£875 PCM

FEATURES

- On Road Parking
- Belgrave
- Double Glazing
- Fitted bathroom
- Brand New
- Two Bedrooms
- Fitted Kitchen
- Close to Local Amenities



2 Bedroom Apartment located in Leicester

Seths Estate Agents present this two bedroom flat situated in the popular and established area of Belgrave, Leicester.

The beautiful property is conveniently located just off Belgrave Road providing a good access to local amenities as well as Leicester City Centre.

This property comprises of an Open Plan Living Room and Fitted Kitchen, Two Bedrooms and a Shower Room.

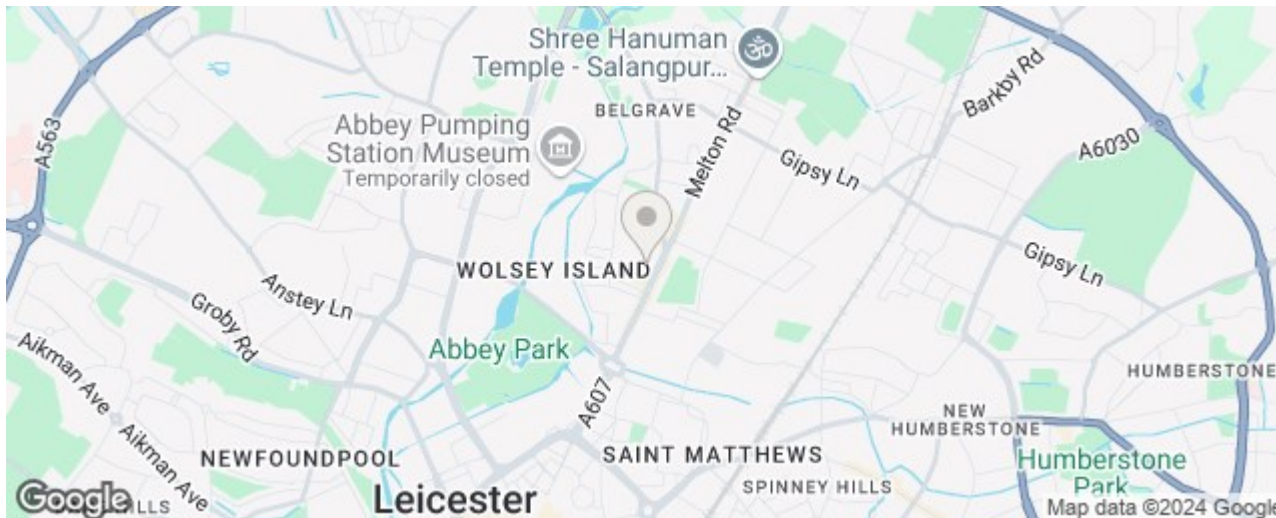
Please note that this property does NOT have a lift and the flat is situated on the Second Floor.

Rent: £875PCM

Security Deposit: £1005

Tenancy Length: 6 or 12 Months

Council Tax: A



Call us on

0116 266 9977

let@seths.co.uk

www.seths.co.uk

Council Tax Band

A

Energy Efficiency Rating

	Current	Potential
Very energy efficient - lower running costs		
(92 plus) A		
(81-91) B	77	77
(69-80) C		
(55-68) D		
(39-54) E		
(21-38) F		
(1-20) G		
Not energy efficient - higher running costs		
England & Wales	EU Directive 2002/91/EC	

Agents Note: Whilst every care has been taken to prepare these particulars, they are for guidance purposes only. All measurements are approximate and are for general guidance purposes only and whilst every care has been taken to ensure their accuracy, they should not be relied upon and potential buyers are advised to recheck the measurements.

