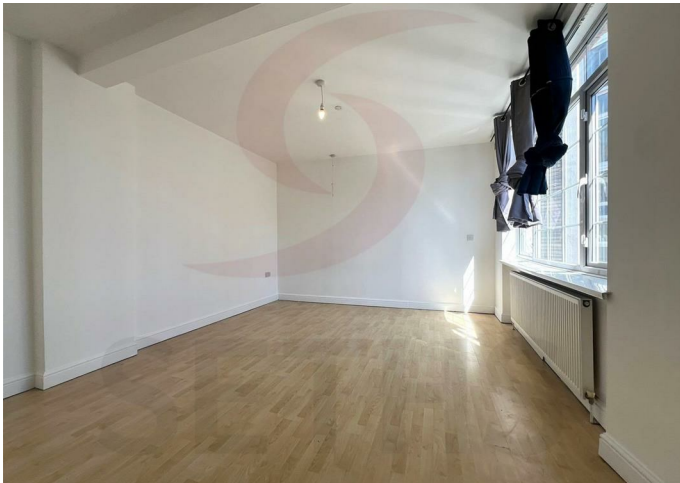


LET AGREED



Apartment

# GRANBY STREET LEICESTER LE1 1DL

## £750 PCM

### FEATURES

- City Centre
- Close to Local Shops
- Spacious Apartment
- Fitted Kitchen
- 1 Bedroom Flat
- Redecorated
- Gas Central Heating
- Fitted Bathroom



 **SETHS**

# 1 Bedroom Apartment located in Leicester

Call us on

0116 266 9977

let@seths.co.uk

www.seths.co.uk

Seth's are proud to market this Redecorated Third Floor Apartment, situated in the heart of the City Centre. This One Bedroom Apartment comes Part-Furnished, and is a fantastic location for individuals who aspire to be local to the City Centre and fantastic Transport Links.

Upon entering the property you are welcomed by the hallway leading to the Open Plan Kitchen/Dining Area.. The Kitchen consists of Wall and Base Units with Worktops Over, Sink, Integrated Gas Hob and Electric Oven.

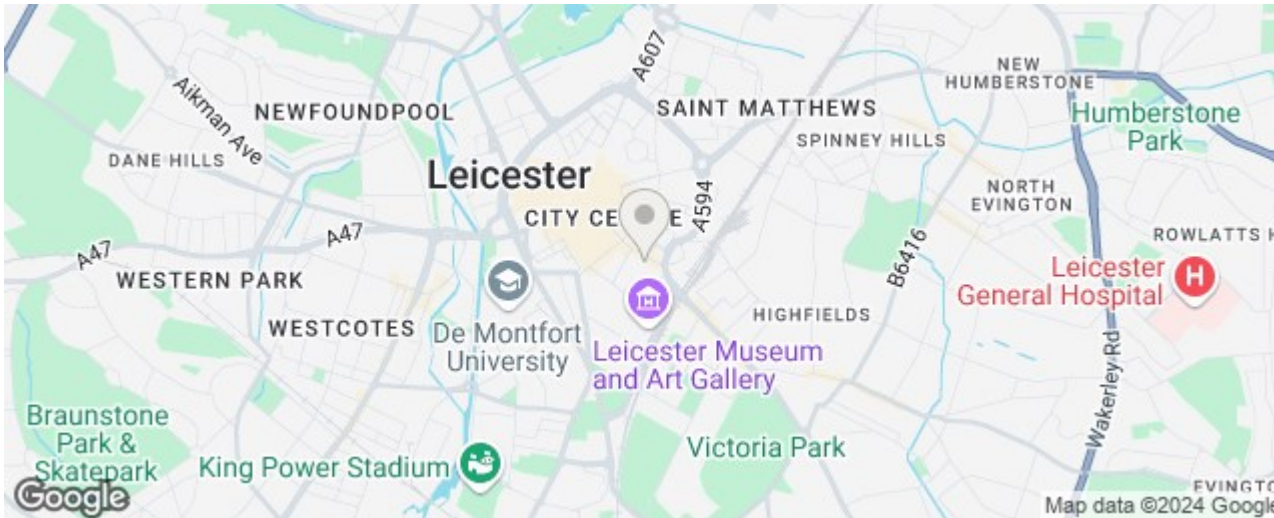
There is also a Fitted Bathroom comprising of partial tiling, inclusive of a Bath with Shower Fitting, a Wash Basin and W.C.

As you manoeuvre around the property, you embrace the Spacious Double Bedroom, and then the Lounge area being partially furnished.

The Property is accessible via the Main Building Staircase which then leads to the Apartment Entrance.

The whole property benefits from Gas Central Heating and new Double Glazing throughout.

Rent: £750PCM  
 Security Deposit: £865  
 Tenancy Length: 6 or 12 Months  
 Council Tax Band: C



Council Tax Band

C

## Energy Efficiency Rating

	Current	Potential
<i>Very energy efficient - lower running costs</i>		
(92 plus) <b>A</b>		
(81-91) <b>B</b>		
(69-80) <b>C</b>		76
(55-68) <b>D</b>	57	
(39-54) <b>E</b>		
(21-38) <b>F</b>		
(1-20) <b>G</b>		
<i>Not energy efficient - higher running costs</i>		
<b>England &amp; Wales</b>	EU Directive 2002/91/EC	

Agents Note: Whilst every care has been taken to prepare these particulars, they are for guidance purposes only. All measurements are approximate and are for general guidance purposes only and whilst every care has been taken to ensure their accuracy, they should not be relied upon and potential buyers are advised to recheck the measurements.

