

LET AGREED



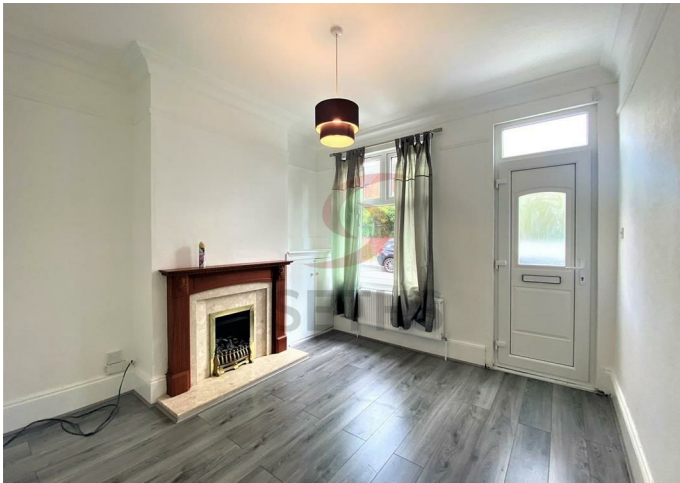
House - Terraced

VICARAGE LANE LEICESTER LE5 1EE

£900 PCM

FEATURES

- 2 Bedroom House
- Fitted Kitchen
- Ensuite
- Paved Garden
- Lounge
- 2 Bathrooms
- Excellent Transport Links
- Central Heating



 **SETHS**

2 Bedroom House - Terraced located in Leicester

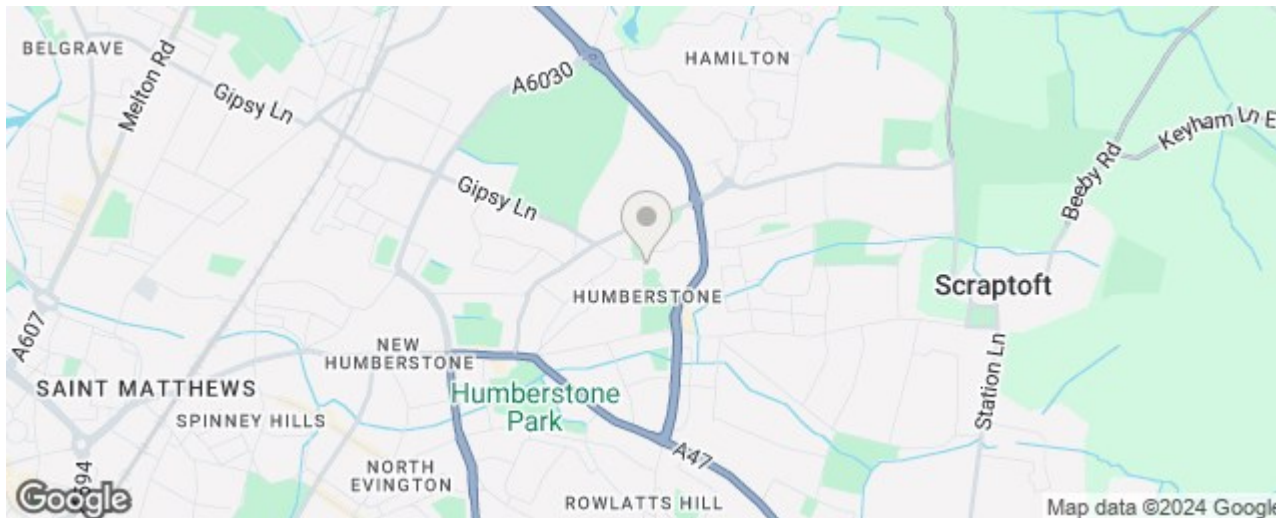
Seths Estate Agents are proud to present this well situated, 2 Bedroom Mid-Terrace house in the Humberstone area of Leicester.

This Ideal Family Home comprises of On Road Parking, 2 Bathrooms, 2 Double Bedrooms, one with an Ensuite, 2 Reception Rooms, Gas Central Heating Throughout and a Garden to the rear.

This very well presented house is Close to Local Amenities such as Shops as Schools.

For More Information and to Arrange a Viewing, Please Contact Us On: 0116 266 9977

Rent: £900.00 PCM
 Security Deposit: £1035.00
 Tenancy Length: 6 or 12 Months
 Council Tax Band: A



Call us on
 0116 266 9977

let@seths.co.uk
 www.seths.co.uk

Council Tax Band
A

Energy Efficiency Rating		Current	Potential
<i>Very energy efficient - lower running costs</i>			
(92 plus) A			
(81-91) B			81
(69-80) C			
(55-68) D		56	
(39-54) E			
(21-38) F			
(1-20) G			
<i>Not energy efficient - higher running costs</i>			
England & Wales		EU Directive 2002/91/EC	

Agents Note: Whilst every care has been taken to prepare these particulars, they are for guidance purposes only. All measurements are approximate and are for general guidance purposes only and whilst every care has been taken to ensure their accuracy, they should not be relied upon and potential buyers are advised to recheck the measurements.

