

AVAILABLE



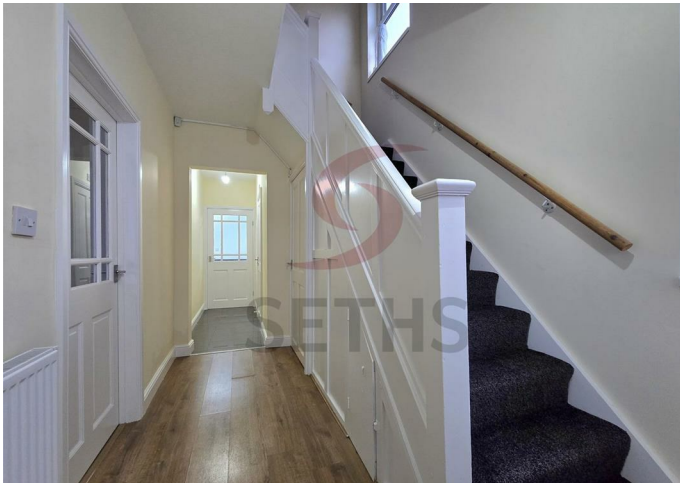
House - Semi-Detached

WAVERTREE DRIVE LEICESTER LE4 7NU

£1,325 PCM

FEATURES

- Beautiful 3 Bedroom House
- Modern Fitted Kitchen
- Double Glazing
- Close To Local Shops
- Through Lounge
- Downstairs Shower Room and Toilet
- Central Heating
- Popular Belgrave Area



 **SETHS**

3 Bedroom House - Semi-Detached located in Leicester

Seths are proud to market this Wonderfully Stylish 3 Bedroom Semi-Detached house on Wavertree Drive, Belgrave in Leicester.

When entering the property, the Entrance Hall leads to a Through Lounge. Next to the Through Lounge is a Modern Kitchen/Diner with Wall and Base Units with Worktops over, Integrated Hob and Oven. Also on the ground floor is a Cloakroom consisting of Shower Cubicle, W.C. and Wash Basin. On the First Floor are Three Bedrooms with a Family Bathroom consisting of Bath, W.C. and Wash Basin.

To the rear of the property is a Garden with Lawn and Patio. The property benefits from Gas Central Heating and Double Glazing Throughout.

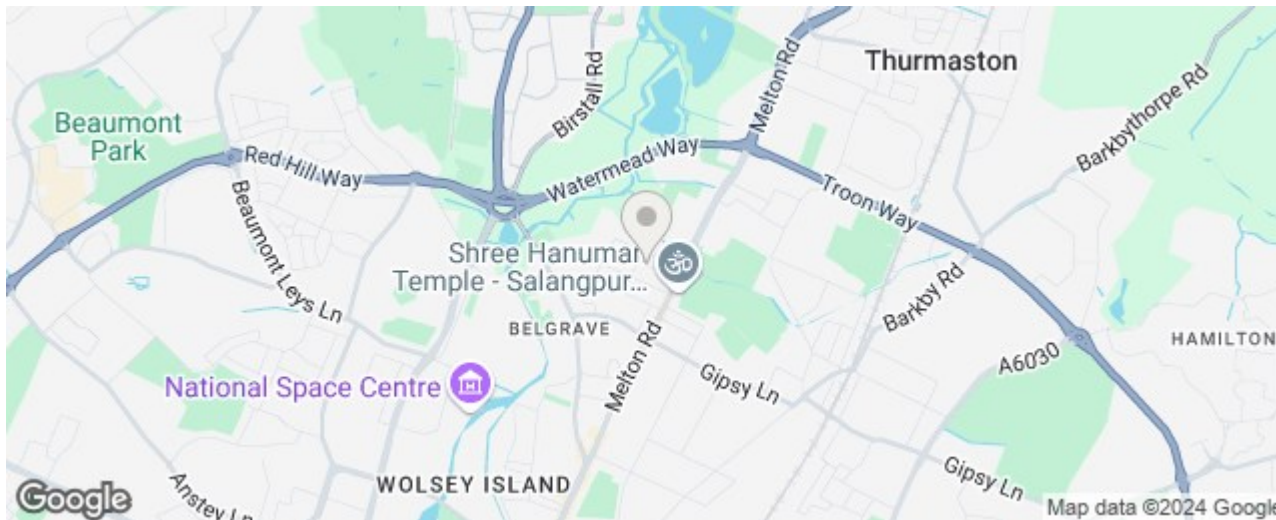
The property has been Newly Painted throughout.

When arriving at the property, there is 1 Car Parking Space.

Close to Melton Road, Local Shops and Amenities and Local Schools.

EARLY VIEWING ADVISED TO AVOID DISAPPOINTMENT

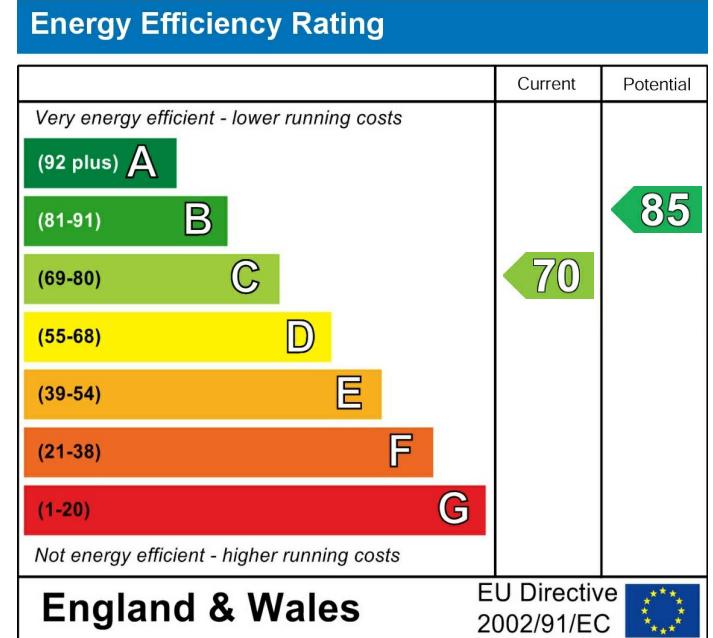
Rent: £1325PCM
 Security Deposit: £1525
 Tenancy Length: 6 or 12 Months
 Council Tax Band: C



Call us on
 0116 266 9977

let@seths.co.uk
 www.seths.co.uk

Council Tax Band
 C



Agents Note: Whilst every care has been taken to prepare these particulars, they are for guidance purposes only. All measurements are approximate and are for general guidance purposes only and whilst every care has been taken to ensure their accuracy, they should not be relied upon and potential buyers are advised to recheck the measurements.

