

Causeway Centre, Whittlesey, Peterborough, PE7 1BU



Kitchen



Bedroom



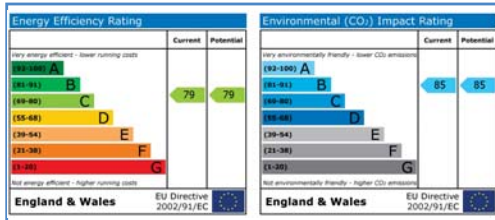
Lounge Aspect 1



Lounge Aspect 2



Bathroom



Energy Performance Certificate

Draft details only may be subject to amendment
None of the statements/measurements in these particulars should be relied on as representations of fact.
Any applications/services mentioned should not be taken as a guarantee that they are in working order.

Harrison Rose

Estate Agents Ltd

FOR SALE



Presenting a one bedroom flat in town centre location.

Causeway Centre, Whittlesey, Peterborough, PE7 1BU

- IDEAL FIRST TIME BUY/INVESTMENT
- TOWN CENTRE LOCATION
- NEWLY REFURBISHED
- ONE BEDROOM
- NO FORWARD CHAIN

£89,995



T: 01733 202525 | info@harrisonroseproperty.com | F: 01733 202962

Ref: 1156

www.harrisonroseproperty.com

Ground Floor

Entrance door leading into the communal hallway, stairs leading to the first floor flat.

Lounge 3.77m (12'4") x 3.67m (12')

Single radiator, TV point, intercom, entry phone, door leading to:

Bedroom 3.01m (9'10") x 2.96m (9'9")

Two uPVC double glazed windows to rear, single radiator.

Kitchen 4.31m (14'2") x 1.62m (5'4")

Fitted with a matching range of base and eye level units with worktop space over cupboards with drawers, a stainless steel sink with mixer tap with tiled surround, built-in electric oven with a four ring gas hob and extractor hood, space for fridge/freezer and washing machine, uPVC frosted double glazed window to rear, single radiator.

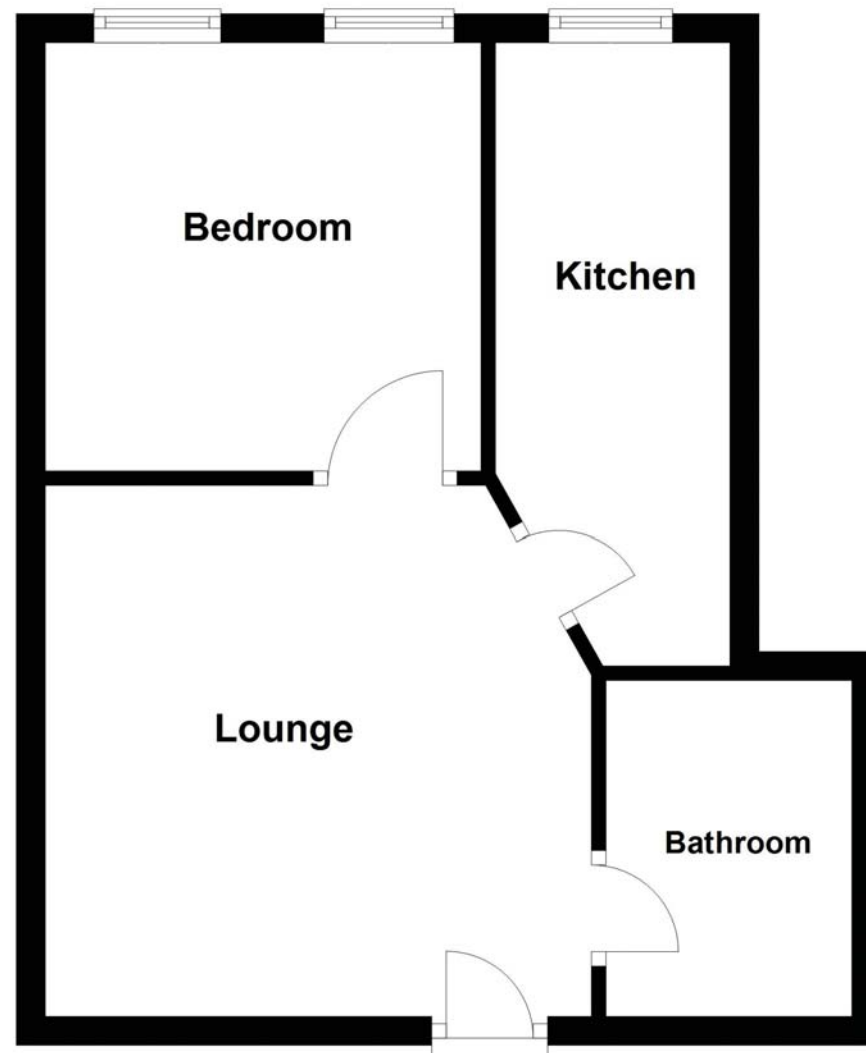
Bathroom

Fitted with a three piece suite comprising a bath with shower over and glass screen, pedestal wash hand basin and low-level WC, tiled surround, heated towel rail, extractor fan.

Draft details only may be subject to amendment
None of the statements/measurements in these particulars should be relied on as representations of fact.
Any applications/services mentioned should not be taken as a guarantee that they are in working order.

- Call today to arrange your free valuation -

Floorplan



- To arrange a viewing, please call us 01733 202525 -