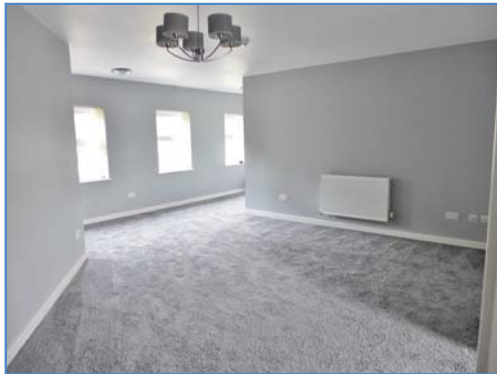


Causeway Centre, Whittlesey, Peterborough, PE7 1BU.



Lounge



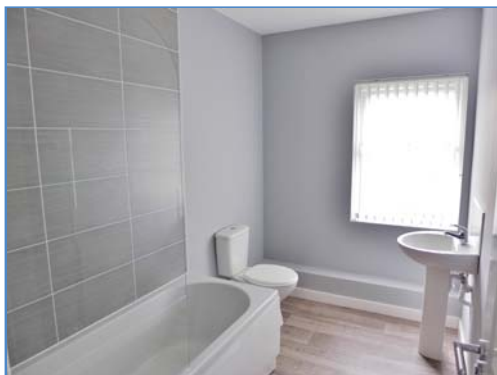
Kitchen/Diner



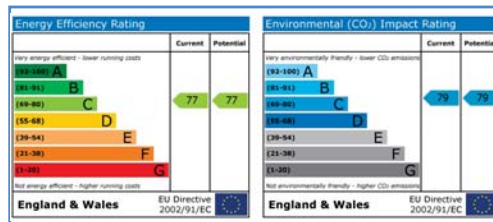
Bedroom One



Bedroom Two



Bathroom



Energy Performance Certificate

Draft details only may be subject to amendment
None of the statements/measurements in these particulars should be relied on as representations of fact.
Any applications/services mentioned should not be taken as a guarantee that they are in working order.

Harrison Rose

Estate Agents Ltd

FOR SALE



Presenting a two bedroom flat in a town centre location.

Causeway Centre, Whittlesey, Peterborough, PE7 1BU.

- IDEAL FIRST TIME BUY/INVESTMENT
- TOWN CENTRE
- NEWLY REFURBISHED
- TWO BEDROOMS
- NO FORWARD CHAIN

£119,995



T: 01733 202525 | info@harrisonroseproperty.com | F: 01733 202962

Ref: 1157

www.harrisonroseproperty.com

Ground Floor

Entrance door leading into the communal hallway, stairs leading to the first floor flat.

Lounge 5.36m (17'7") x 5.69m (18'8")

Two uPVC double glazed windows to side, TV point, entry intercom system, open plan leading to:

Kitchen 2.96m (9'8") x 2.14m (7')

Fitted with a matching range of base and eye level units with worktop space over cupboards and drawers, stainless steel sink with mixer tap, built-in electric oven with a four ring gas hob, extractor hood over, tiled surround, space for fridge/freezer and washing machine, uPVC double glazed window to side.

Bedroom 1 4.32m (14'2") max x .68m (12'1")max

Two uPVC double glazed windows to side, single radiator.

Bedroom 2 2.97m (9'9") x 2.95m (9'8")

UPVC double glazed window to side, single radiator.

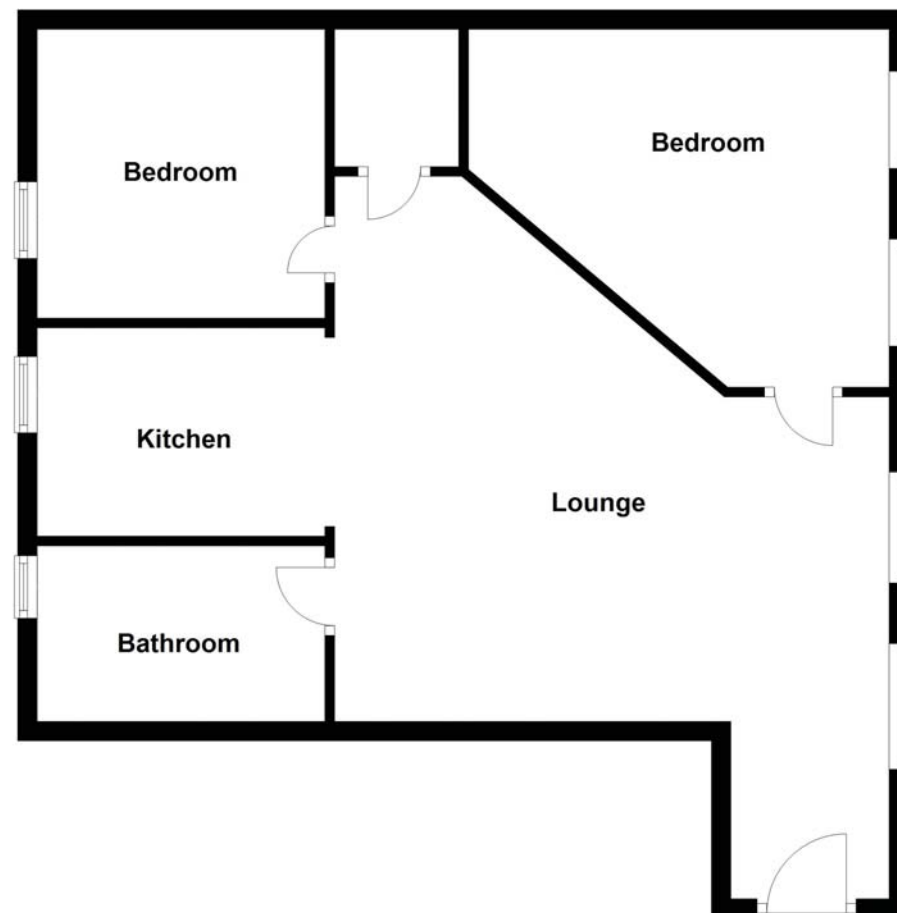
Bathroom

Fitted with a three piece suite, comprising a bath with a shower over and a glass screen, pedestal wash hand basin, low-level WC, tiled splashbacks, heated towel rail, extractor fan, uPVC frosted double glazed window to side.

Draft details only may be subject to amendment
None of the statements/measurements in these particulars should be relied on as representations of fact.
Any applications/services mentioned should not be taken as a guarantee that they are in working order.

- Call today to arrange your free valuation -

Floorplan



- To arrange a viewing, please call us 01733 202525 -