

Northgate, Whittlesey, Peterborough, PE7 1RA.



Kitchen



Lounge



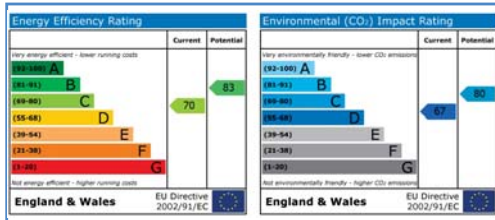
Bedroom



Bathroom



Garden



Energy Performance Certificate

Draft details only may be subject to amendment
None of the statements/measurements in these particulars should be relied on as representations of fact.
Any applications/services mentioned should not be taken as a guarantee that they are in working order.

Harrison Rose

Estate Agents Ltd

FOR SALE



Semi-detached three bedroom house located in Whittlesey.

Northgate, Whittlesey, Peterborough, PE7 1RA.

- SEMI-DETACHED
- THREE BEDROOMS
- DINING ROOM
- GARAGE & AMPLE PARKING
- ENCLOSED GARDEN

£195,000



T: 01733 202525 | info@harrisonroseproperty.com | F: 01733 202962

Ref: 1188

www.harrisonroseproperty.com

Ground Floor

Hall
Entrance door, uPVC double glazed window to side, single radiator, telephone point, coving to ceiling, stairs leading to landing, doors to:

Lounge 4.40m (14'5") x 3.50m (11'6") max
Two uPVC double glazed windows to front, double radiator, TV point, coving to ceiling.

Kitchen 5.77m (18'11") max x 2.90m (9'6")
Fitted with a matching range of base and eye level units with worktop space over, 1+1/2 bowl sink with mixer tap, built-in oven, four ring gas hobs, extractor hood, half tiled surround, uPVC double glazed window to side and rear, doors leading to dining room, WC and rear.

Dining Room 3.35m (11')max x 3.14m (10'4")max
Double radiator, TV point, coving to ceiling, uPVC double glazed double door to rear.

WC
Fitted with a two piece suite, comprising a pedestal wash hand basin and low-level WC, tiled splashbacks, single radiator, combi boiler.

First Floor

Landing
UPVC double glazed window to side, double radiator, built in storage cupboard, access to loft via ladder, lights in loft, doors to:

Bedroom 1 3.49m (11'6")max x 4.27m (14') max
UPVC double glazed window to front, double radiator, TV point, coving to ceiling.

Bedroom 2 3.14m (10'4") max x 4.04m (13'3") max
UPVC double glazed window to rear, double radiator, coving to ceiling.

Bedroom 3 2.82m (9'3") x 2.16m (7'1")
UPVC double glazed window to front, double radiator, TV point, coving to ceiling.

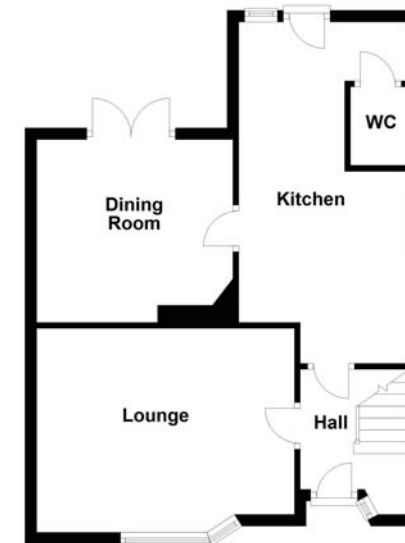
Bathroom
Fitted with a four piece suite, comprising a spa bath, shower enclosure, pedestal wash hand basin, and low-level WC, extractor fan, tiled surround, double radiator, uPVC frosted double glazed window to rear.

Outside
The front of the property is gravelled allowing for off road parking with greenery to the side, side gate leading to the rear and access to garage. The rear garden is enclosed which is mainly laid to lawn with a patio area, border of a mixture of plants and shrubs.

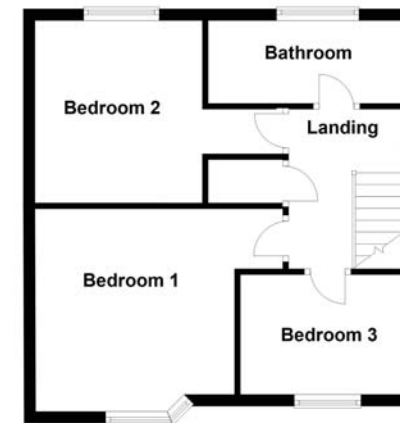
Draft details only may be subject to amendment
None of the statements/measurements in these particulars should be relied on as representations of fact.
Any applications/services mentioned should not be taken as a guarantee that they are in working order.

- Call today to arrange your free valuation -

Ground Floor



First Floor



- To arrange a viewing, please call us 01733 202525 -